

Job: _____
 Location: _____
 Schedule No.: _____
 System Designation: _____

Engineer: _____
 Architect: _____
 Location: _____
 Date: _____
 For:

	Approval	Review	Construction
--	----------	--------	--------------

FEATURES

Outdoor Unit: VPC024H4M-3P



- Variable-capacity outdoor unit
- Reuse existing line sets
- Sound levels as low as 40 dBA
- Controls versatility

Indoor Unit: CBA25UHV-024



- Upflow or horizontal applications
- Wide-range check and expansion valve is factory installed
- Optional field installed electric heaters

PIPING

Length and Maximum Height Difference

Maximum Pipe Length - Actual Length ft. (m)	164 (50)
Maximum Pipe Length - Equivalent Length ft. (m)	180 (55)
Maximum Height Difference ft. (m)	98 (30)

PRODUCT WARRANTY

Compressor – Ten year limited warranty*
 All other covered components - Ten year limited warranty*

*Applicable to Lennox REAL products only and require product registration

OPTIONAL ACCESSORIES

M30 Smart Wi-Fi Thermostat (15Z69)
 E30 Smart Wi-Fi Thermostat (20A65)



NOTE – Due to Lennox' ongoing commitment to quality, Specifications, Ratings and Dimensions subject to change without notice and without incurring liability. Improper installation, adjustment, alteration, service or maintenance can cause property damage or personal injury. Installation and service must be performed by a qualified installer and servicing agency.



SUBMITTAL DATA - OUTDOOR UNIT

VPC024H4M-3P - CBA25UHV-024

Single Zone Lennox REAL Heat Pump

OUTDOOR SPECIFICATIONS

PERFORMANCE		
Cooling Capacity ¹ (Btu/h)	Nominal	23,800
	Rated ²	23,800
EER2		11.5
SEER2		16.2
Heating Capacity ¹ (Btu/h)		23,800
HSPF2		7.50
COP2 at 5°F (W/W)		1.70
Operating Range (°F)	Heating	-13°F to 86°F
	Cooling	5°F to 122°F
ELECTRICAL DATA		
Power Supply (Volts/Phase/Hertz)		208-230/1/60
Minimum Circuit Ampacity (A)		15
Maximum Overcurrent Protection (A)		25
Compressor RLA (A)		10.6
Number of Compressors		1
Outdoor Fan Power Output (W)		190
Outdoor Fan FLA (A)		1.3

GENERAL DATA		
Connection Ratio		50% to 130%
Maximum Number of Indoor Units		4
Sound Pressure Level (dBA) Heating - High/Low		59/40
Sound Pressure Level (dBA) Cooling - High/Low		56/40
Refrigerant Type		R-410A
Factory Refrigerant Charge (each unit)		6 lbs. 13 oz.
DIMENSIONS		
Unit	Height	34-1/64
Dimensions (in)	Width	41
	Depth	16-3/16
Shipping Weight (lb)		192
Net Weight (lb)		170

NOTES

- Cooling and Heating Capacity data is rated at the following conditions:
Cooling: 80°FDB / 67°FWB Indoor, 95°FDB Outdoor Heating: 70°FDB Indoor, 47°FDB / 43°FWB Outdoor
- Complies with AHRI 210/240 testing standards

INDOOR SPECIFICATIONS

GENERAL DATA		
Connections	Suction/Vapor line (o.d.) - in. sweat	3/4
	Liquid line (o.d.) - in. sweat	3/8
	Condensate - in. fpt	(2) 3/4
Indoor Coil	Net face area - ft. ²	3.77
	Tube outside diameter - in.	3/8
	Number of rows	3
	Fins per inch	15
Blower	Wheel nominal diameter x width - in.	9 x 6
	Blower motor output - hp	1/2
¹ Filters	Size of filter - in.	15 x 20 x 1
Shipping Data -1 package - lbs.		136

ELECTRICAL DATA		
	Voltage - 1 phase (60 hz)	208/230V
² Maximum overcurrent protection (unit only) ³		15
Minimum circuit ampacity (unit only) Blower Motor		4.9
	Full Load Amps	3.9

NOTES

- Disposable filter.
- HACR type circuit breaker or fuse.
- Refer to National or Canadian Electrical Code manual to determine wire, fuse and disconnect size requirements. Use wires suitable for at least 167°F.

NOTE – Due to Lennox' ongoing commitment to quality, Specifications, Ratings and Dimensions subject to change without notice and without incurring liability.

Improper installation, adjustment, alteration, service or maintenance can cause property damage or personal injury.

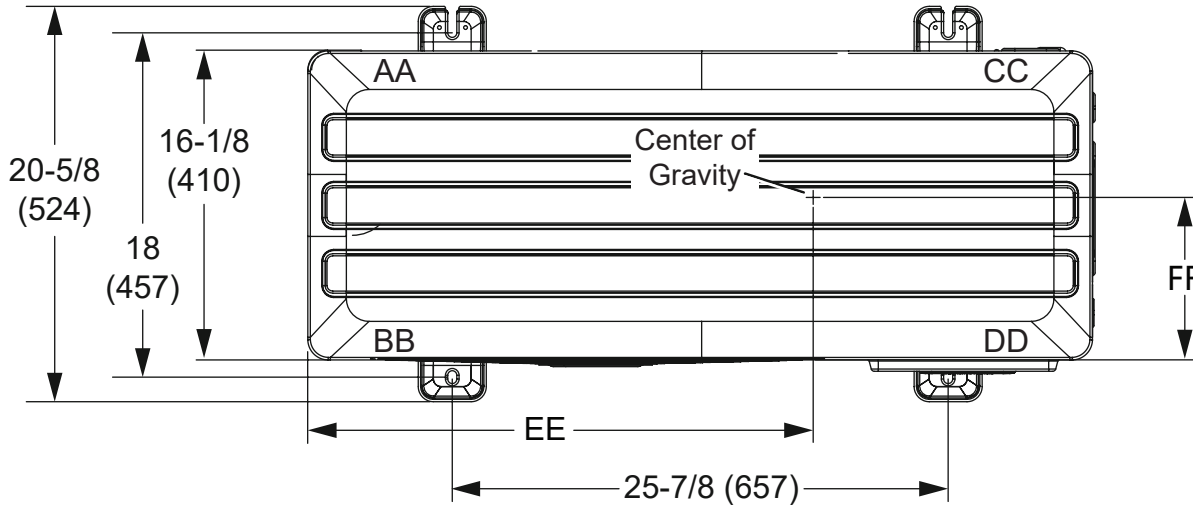
Installation and service must be performed by a qualified installer and servicing agency.

(496034)

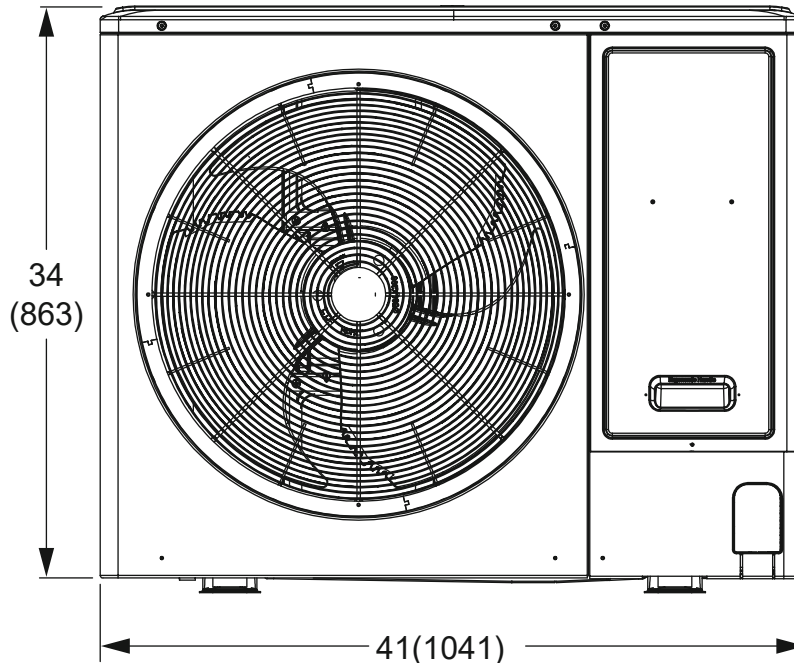
©2023 Lennox Industries Inc.

DIMENSIONAL DRAWINGS - INCHES (MM)

CORNER WEIGHTS								CENTER OF GRAVITY			
AA		BB		CC		DD		EE		FF	
lbs.	kg	lbs.	kg	lbs.	kg	lbs.	kg	in.	mm	in.	mm
30	14	28	13	81	37	46	21	28-1/8	714	12-3/8	314



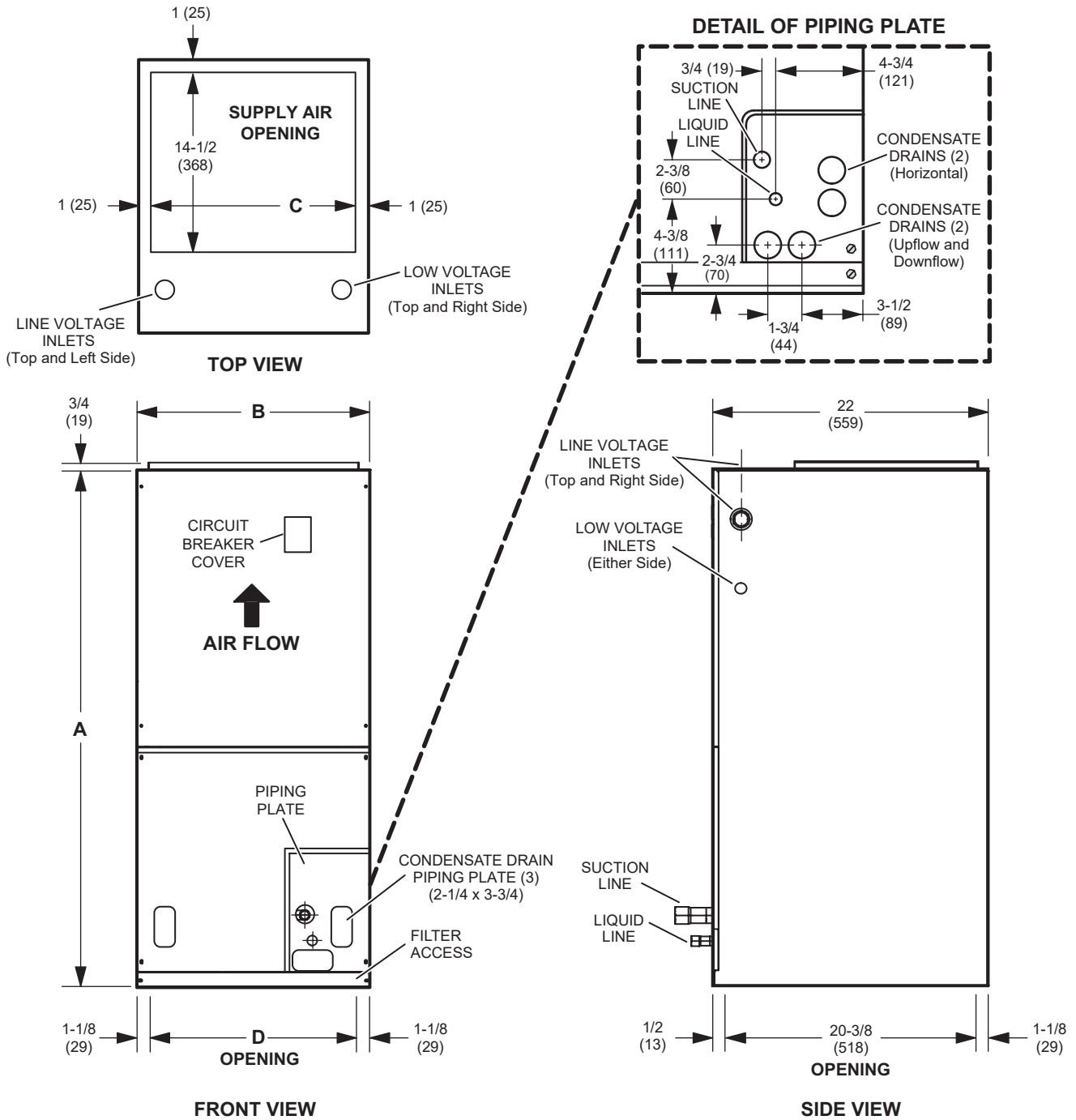
TOP VIEW



FRONT VIEW

NOTE - Due to Lennox' ongoing commitment to quality, Specifications, Ratings and Dimensions subject to change without notice and without incurring liability. Improper installation, adjustment, alteration, service or maintenance can cause property damage or personal injury. Installation and service must be performed by a qualified installer and servicing agency.

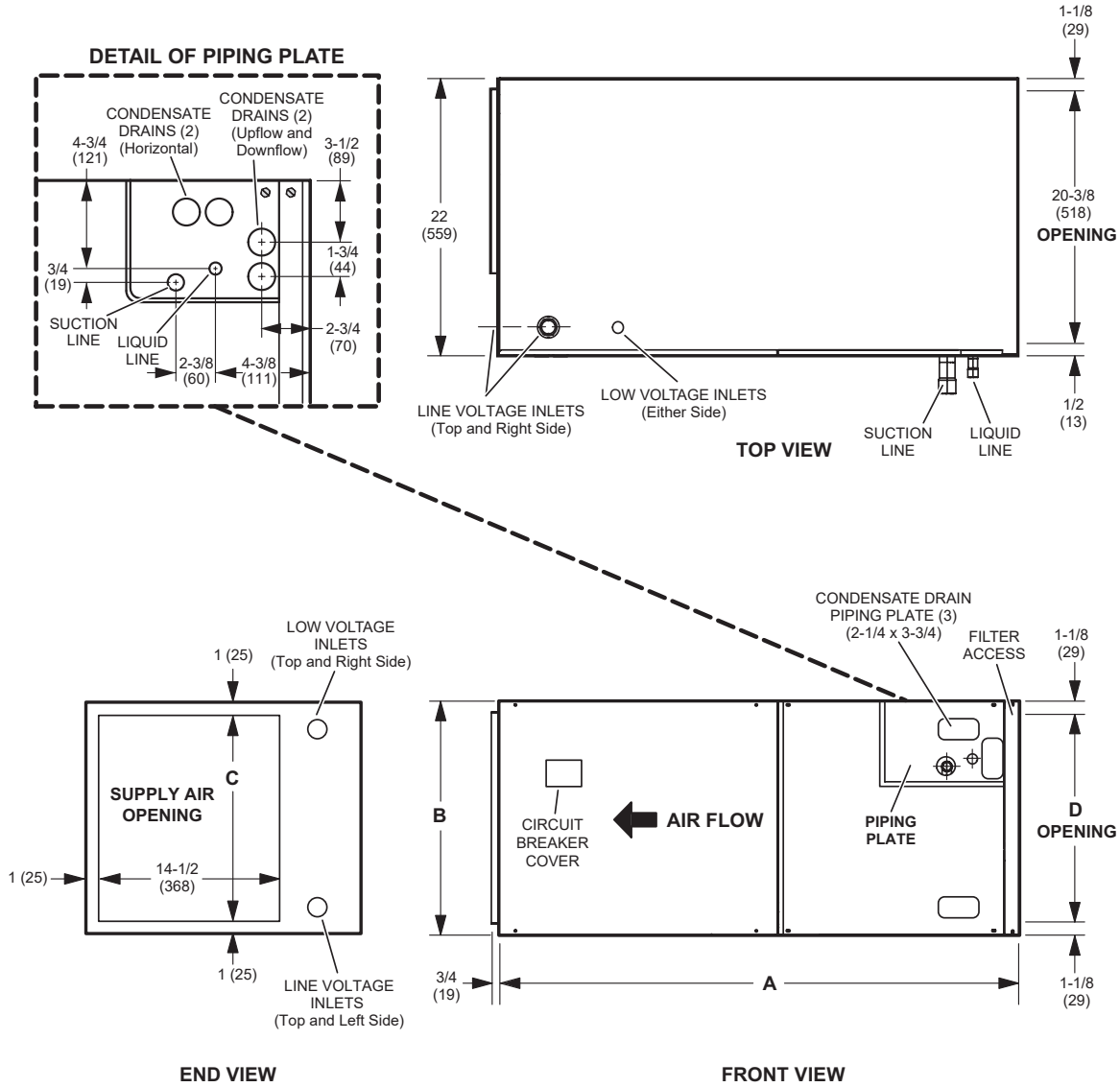
DIMENSIONAL DRAWINGS - INCHES (MM)



Dimensions	024	
	in.	mm
A	45-1/2	1156
B	18-1/2	470
C	16-1/2	419
D	16-1/4	413

NOTE - Due to Lennox' ongoing commitment to quality, Specifications, Ratings and Dimensions subject to change without notice and without incurring liability. Improper installation, adjustment, alteration, service or maintenance can cause property damage or personal injury. Installation and service must be performed by a qualified installer and servicing agency. (496034)

DIMENSIONAL DRAWINGS - INCHES (MM)



Dimensions	024	
	in.	mm
A	45-1/2	1156
B	18-1/2	470
C	16-1/2	419
D	16-1/4	413

NOTE – Due to Lennox' ongoing commitment to quality, Specifications, Ratings and Dimensions subject to change without notice and without incurring liability. Improper installation, adjustment, alteration, service or maintenance can cause property damage or personal injury. Installation and service must be performed by a qualified installer and servicing agency.