

Job:
 Location:
 Schedule No.:
 System Designation:

Engineer:
 Architect:
 Location:
 Date:

For: Reference Approval Review Construction

One Way Cassette Indoor Unit

FEATURES

- Pre Heat Function
- Auto Addressing
- Auto Restart
- Integral Condensate Pump
- Electronic Expansion Valve
- Built-in Four Dry Contact Relays
- Flare Connections
- High-Efficiency DC Motor
- Refrigerant R-410A
- Six capacity sizes from 7,000 to 24,000 Btu/h

WARRANTY

- 10-year limited warranty.*See warranty for details.

SPECIFICATIONS

PERFORMANCE

| | | |
|---------------------------------------|--------|--------|
| Cooling Capacity ¹ (Btu/h) | | 18000 |
| Heating Capacity ¹ (Btu/h) | | 21000 |
| Airflow (CFM) | High | 472 |
| | Medium | 429 |
| | Low | 387 |
| External Static Pressure (in.w.g.) | | 0~0.04 |
| Sound (dBA) | High | 45.5 |
| | Medium | 43.1 |
| | Low | 40.8 |

ELECTRICAL DATA

| | |
|--------------------------------------|-------------------|
| Power Supply (Volts/Phase/Hertz) | 208/230V-1Ph-60Hz |
| Minimum Circuit Ampacity (MCA) | 0.58 |
| Max. Overcurrent Protection (MOCP) | 15 |
| Cooling Power Input ² (W) | 32 |
| Cooling Rated Current (A) | 0.4 |
| Heating Power Input ² (W) | 28 |
| Heating Rated Current (A) | 0.4 |
| Indoor Fan Motor Input (W) | 30(H:0PA) |

DIMENSIONS

| | | |
|--------------------------------|--------|--------|
| Unit Dimensions (in) | Height | 7-1/2 |
| | Width | 50-1/4 |
| | Depth | 17-3/4 |
| Diffuser Panel Dimensions (in) | Height | 1 |
| | Width | 53-1/8 |
| | Depth | 19-7/8 |
| Liquid Pipe Connection (in) | | 3/8 |
| Gas Pipe Connection (in) | | 5/8 |
| Drain Connection (in) | | 1 |
| Net Weight (lb) | | 36.8 |
| Shipping Weight (lb) | | 49.6 |



OPTIONAL ACCESSORIES

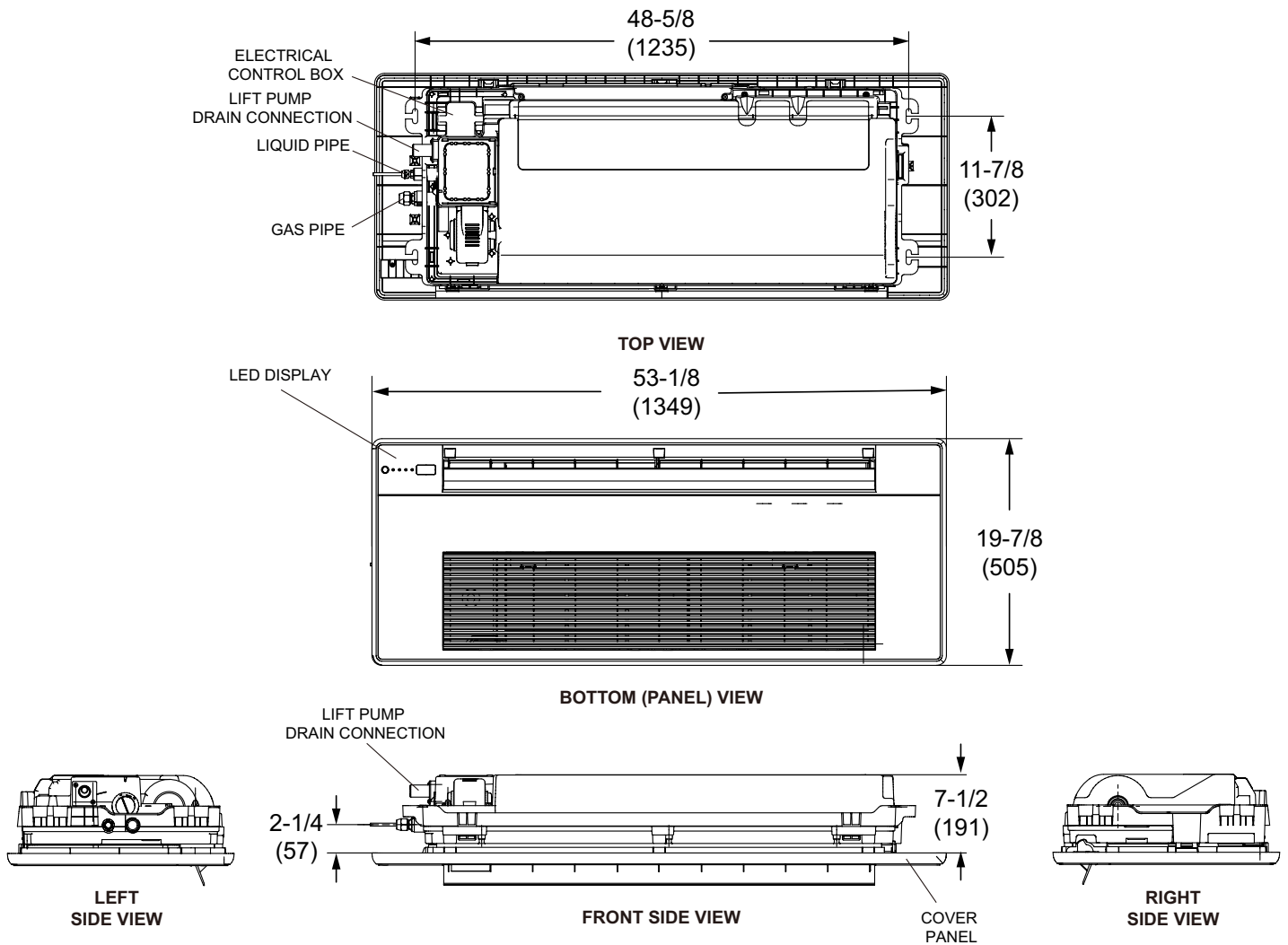
| | |
|-------------------------------|-------------|
| Non-Programmable Controller | V0STAT54P-3 |
| Programmable Wired Controller | V0STAT51P-3 |
| Infrared Wireless Controller | V0STAT52P-1 |
| Occupancy Sensor | V0SNSR78P-3 |
| HHE Relay Kit | V0CTRL92P-3 |
| Hotel Keycard Interface | V0CTRL88P-1 |

NOTES

- Cooling and Heating capacity data is rated at the following conditions:
 Cooling: 80°FDB / 67°FWB Indoor, 95°FDB
 Outdoor Heating: 70°FDB Indoor, 47°FDB / 43°FWB Outdoor.
- Power Input values are rated at high fan speed.



DIMENSIONAL DRAWINGS - INCHES (MM)



NOTE - Due to Lennox' ongoing commitment to quality, Specifications, Ratings and Dimensions subject to change without notice and without incurring liability. Improper installation, adjustment, alteration, service or maintenance can cause property damage or personal injury. Installation and service must be performed by a qualified installer and servicing agency.