



VRF

VOWA

One-Way Cassette Indoor Models - 60 Hz

Bulletin No. 210904
July 2019

**COMMERCIAL
PRODUCT SPECIFICATIONS**

Compact design, ultra slim body with a minimum thickness of 6 inches below the ceiling, especially suitable for narrow ceilings, such as in lobbies and small meeting rooms.

Reserved fresh air intake port (015 thru 024 models only) for high quality air creates a comfortable and healthy environment.



APPROVALS

- Units are ETL certified for the U.S. and Canada

WARRANTY

- **Components** - Limited ten years for qualifying installations. See Warranty Certificate for details

FEATURES

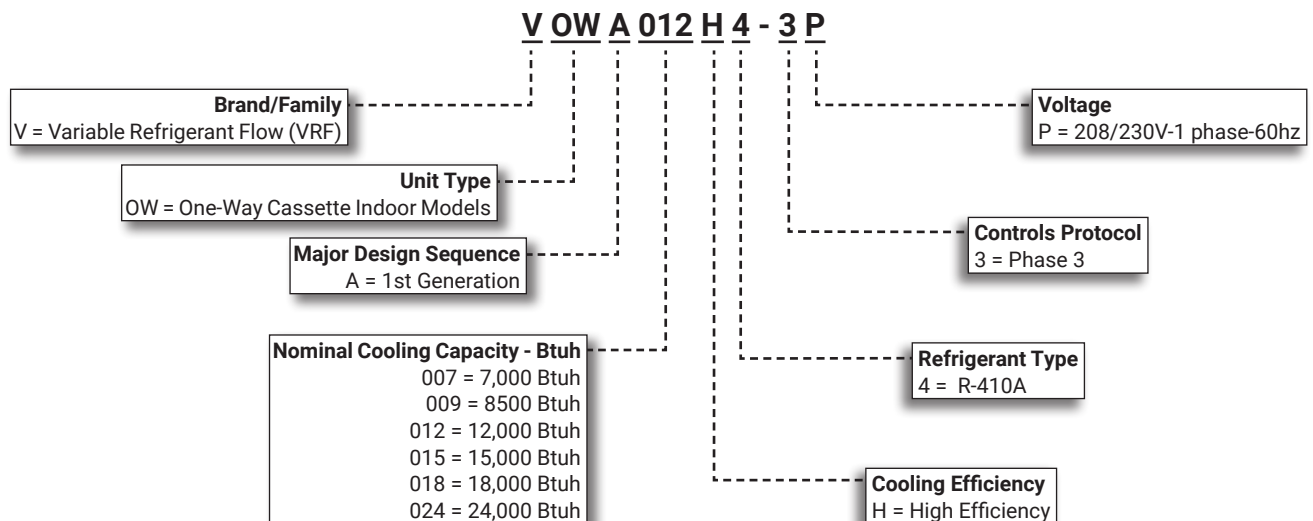
- **One Direction Air Flow** - One direction air flow guarantees quick cooling, flexible installation position
- **Pre-Heat Function** - Delays the operation of the fan until the indoor coil has reached a selected temperature which prevents the discharge of cold air while the system is operating in the "heating" mode
- **Digital Readout/Infrared Receiver Panel** - Mounted on unit. LEDs display unit operation status, and codes for maintenance and servicing. Infrared receiver for use with a wireless remote control (not furnished).

TABLE OF CONTENTS

Air Throw Data 8
 Cooling Capacity 9
 Dimensions 4
 Heating Capacity 12
 Installation Clearances 5
 Model Number Identification 1
 Sound Data 5
 Specifications 2

- **Unit Addressing** - An optional wireless remote control (not furnished) can be used to inquire and modify each indoor unit's address.
- **Auto Restart** - Automatically restores the previous function setting if power is interrupted.
- **Built-In Condensate Lift Pump** - 28 inches.
- **Electronic Expansion Valve** - Assures optimal performance throughout the application range.
- **Flare Connections** - Equipped with liquid and gas flare fittings for quick and secure piping.
- **Turbo Fan With Backward Curved Blades** - Reduces sound levels and air resistance.
- **Three-Stage Fan Speed (High Efficiency DC Motor)** - Fan functions at three levels: low, medium, high..
- **Air Filter** - Cleanable air filter is furnished as standard.

MODEL NUMBER IDENTIFICATION



SPECIFICATIONS
007 - 012

General Data		Nominal kBtuh	7	9	12
		Model Number	VOWA007H4	VOWA009H4	VOWA012H4
		Efficiency	High	High	High
¹ Cooling Performance	Net Cooling Capacity - Btuh		7,000	9,000	12,000
	Total Unit Power Input (W)		10	12	18
	Rated current (A)		0.23	0.23	0.29
¹ Heating Performance	Net Heating Capacity - Btuh		8,000	10,000	13,500
	Total Unit Power Input (W)		10	12	18
	Rated current (A)		0.23	0.23	0.29
Refrigerant	Type		R-410A	R-410A	R-410A
Indoor fan motor	Input - W		10	10	15
Indoor coil	Number of rows		2	2	2
	Fin spacing - in.		1/16	1/16	1/16
	Coil length x height x width - in.		30 x 10 x 1-1/16	30 x 10 x 1-1/16	30 x 10 x 1-1/16
	Number of circuits		3	4	4
	Tube outside diameter and type - in.		1/4 - Rifled Copper Tubing		
	Fin type		Hydrophilic Coated Aluminum		
	Expansion device type		Electronic Expansion Valve		
	Design Pressure (high / low)- psig		650 / 250		
Indoor Coil Connections	Liquid pipe o.d. - in. (flare)		1/4	1/4	1/4
	Gas pipe o.d. - in. (flare)		1/2	1/2	1/2
	Lift pump drain connection o.d. - in.		1	1	1
Indoor Blower	Airflow (super high/high/medium/low) - cfm		227 / 181 / 143	273 / 226 / 180	310 / 266 / 213
	Sound data (high / medium / low) dBA		35.4 / 32 / 29.4	41.5 / 36 / 32.5	45 / 41 / 36.1
Control Wiring (AWG)			2-Core Shielded, Stranded, Polarity Sensitive, 18 AWG		
Weight Data	Unit weight (net / shipping) - lbs.		26 / 36	27 / 36	27 / 36
	Diffuser Panel weight (net / shipping) - lbs.		8 / 12	8 / 12	8 / 12

ELECTRICAL DATA

	Line voltage data - 60 hz - 1ph		208/230V	208/230V	208/230V
	² Maximum overcurrent protection (amps)		15	15	15
	³ Minimum circuit ampacity		0.29	0.29	0.37
	Indoor Blower Motor - Full load amps		0.23	0.23	0.29

¹ Nominal capacities are based on the following conditions (with 25 ft. of connecting refrigerant lines);

- Cooling Ratings - 95°F outdoor air temperature and 80°F db/67°F wb entering indoor coil air.
- Heating Ratings - 47°F db/43°F wb outdoor air temperature and 70°F db entering indoor coil air.

² HACR type circuit breaker or fuse.

³ Refer to National or Canadian Electrical Code manual to determine wire, fuse and disconnect size requirements.

SPECIFICATIONS **015 - 024**

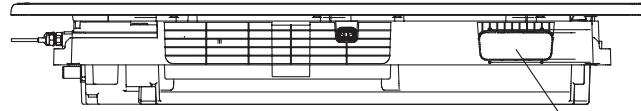
General Data		Nominal kBtuh	15	18	24
		Model Number	VOWA015H4	VOWA018H4	VOWA024H4
		Efficiency	High	High	High
¹ Cooling Performance	Net Cooling Capacity - Btuh		15,000	18,000	24,000
	Total Unit Power Input (W)		20	30	31
	Rated current (A)		0.35	0.46	0.46
¹ Heating Performance	Net Heating Capacity - Btuh		17,000	21,000	27,000
	Total Unit Power Input (W)		20	30	31
	Rated current (A)		0.35	0.46	0.46
Refrigerant	Type		R-410A	R-410A	R-410A
Indoor fan motor	Input - W		20	30	31
Indoor coil	Number of rows		2	2	2
	Fin spacing - in.		1/16	1/16	1/16
	Coil length x height x width - in.		37-5/8 x 9-1/8 x 1-1/16	37-5/8 x 9-1/8 x 1-1/16	37-5/8 x 9-1/8 x 1-1/16
	Number of circuits		4	4	5
	Tube outside diameter and type - in.		1/4 - Rifled Copper Tubing		
	Fin type		Hydrophilic Coated Aluminum		
	Expansion device type		Electronic Expansion Valve		
	Design Pressure (high / low)- psig		650 / 250		
Indoor Coil Connections	Liquid pipe o.d. - in. (flare)		1/4	3/8	3/8
	Gas pipe o.d. - in. (flare)		1/2	5/8	5/8
	Lift pump drain connection o.d. - in.		1	1	1
Indoor Blower	Airflow (super high/high/medium/low) - cfm		379 / 345 / 309	472 / 429 / 387	517 / 472 / 408
	Sound data (high / medium / low) dBA		40.7 / 38.1 / 36.3	45.5 / 43.1 / 40.8	46.2 / 43.6 / 42.2
Control Wiring (AWG)			2-Core Shielded, Stranded, Polarity Sensitive, 18 AWG		
Weight Data	Unit weight (net / gross) - lbs.		37 / 47	37 / 47	39 / 50
	Diffuser Panel weight (net / gross) - lbs.		9 / 12	9 / 12	9 / 12
ELECTRICAL DATA					
	Line voltage data - 60 hz - 1ph		208/230V	208/230V	208/230V
	² Maximum overcurrent protection (amps)		15	15	15
	³ Minimum circuit ampacity		0.44	0.58	0.58
	Indoor Blower Motor - Full load amps		0.35	0.46	0.46

¹ Nominal capacities are based on the following conditions (with 25 ft. of connecting refrigerant lines);
 • Cooling Ratings - 95°F outdoor air temperature and 80°F db/67°F wb entering indoor coil air.
 • Heating Ratings - 47°F db/43°F wb outdoor air temperature and 70°F db entering indoor coil air.

² HACR type circuit breaker or fuse.

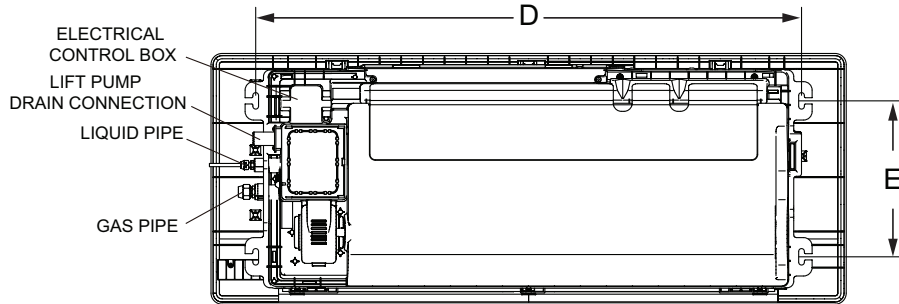
³ Refer to National or Canadian Electrical Code manual to determine wire, fuse and disconnect size requirements.

DIMENSIONS



REAR SIDE VIEW

6-5/8 x 2-1/2 in. (168 x 57 mm)
FRESH AIR INTAKE PORT
(015-018-024 Models Only)



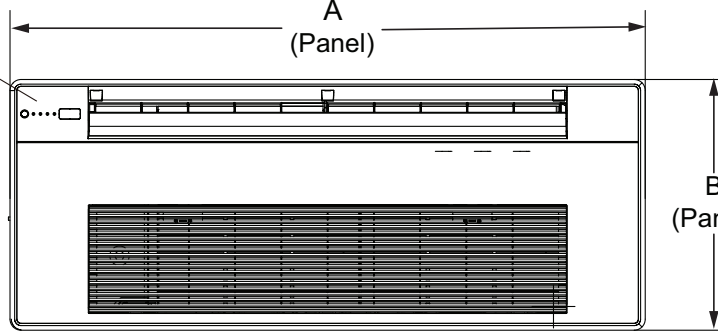
TOP VIEW

ELECTRICAL CONTROL BOX
LIFT PUMP
DRAIN CONNECTION
LIQUID PIPE
GAS PIPE

A
(Panel)

B
(Panel)

LED DISPLAY

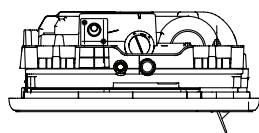


BOTTOM (PANEL) VIEW

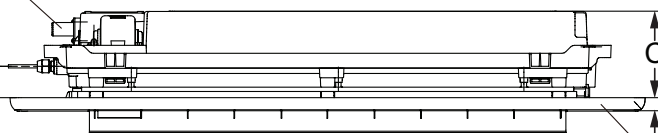
LIFT PUMP
DRAIN CONNECTION

2-1/4
(57)

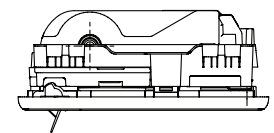
C
1 (25)
COVER PANEL



LEFT SIDE VIEW



FRONT SIDE VIEW

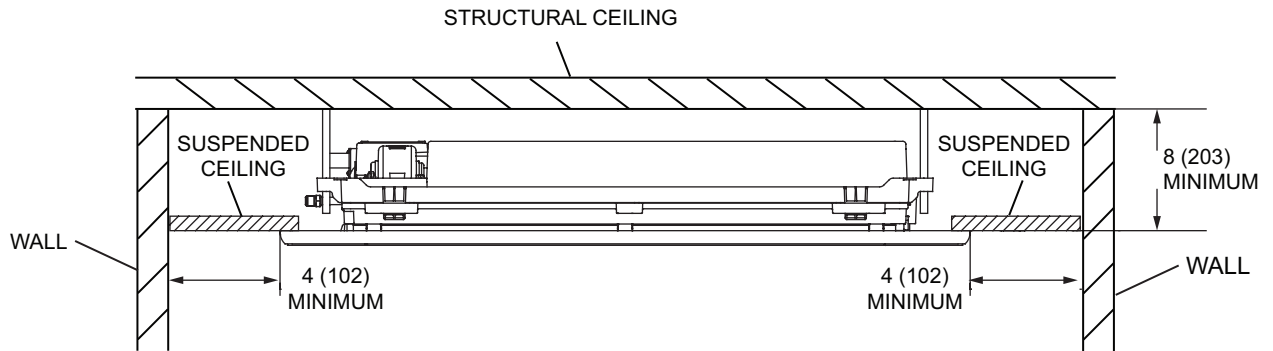


RIGHT SIDE VIEW

Size	A		B		C		D		E	
	in.	mm	in.	mm	in.	mm	in.	mm	in.	mm
007, 009, 012	46-1/2	1181	18-3/8	467	6	152	40	1016	11-3/8	289
015, 018, 024	53-1/8	1349	19-7/8	505	7-1/2	191	48-5/8	1235	11-7/8	302

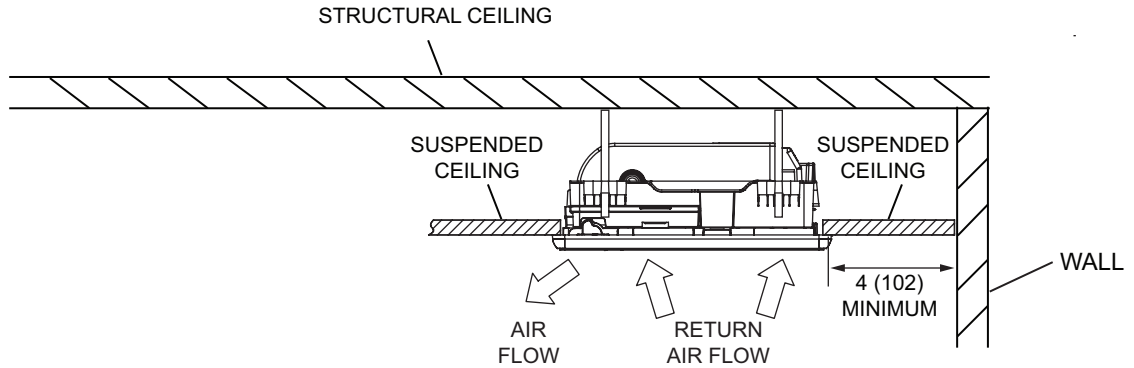
NOTE - Horizontal installation only.

INSTALLATION CLEARANCES



NOTE - Minimum Clearance to Floor: 90 inches (2286 mm)
Maximum Clearance to Floor: 160 inches (4064 mm)

FRONT VIEW



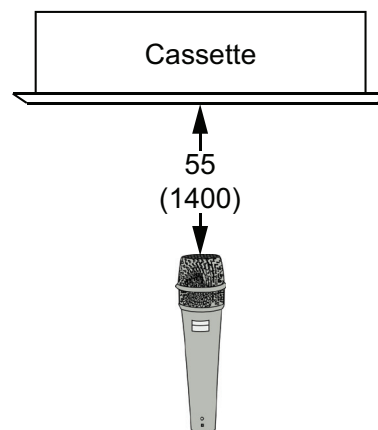
NOTE - No obstacles or restrictions in front of air outlet.

SIDE VIEW

SOUND DATA

SOUND LEVELS

Model No.	Low	Medium	High
VOWA007	29.4	32	35.4
VOWA009	32.5	36	41.5
VOWA012	36.1	41	45
VOWA015	36.3	38.1	40.7
VOWA018	40.8	43.1	45.5
VOWA024	42.2	43.6	46.2



NOTE: • Semi-anechoic chamber conversion value is measured at a point 55 inches (1400 mm) under the unit.

SOUND DATA

VOWA007H4

Mode	Fan Speed	Octave Band Sound Power Levels dBA, re 10 ⁻¹² Watts Center Frequency - HZ								Sound Rating Number dBA
		63	125	250	500	1000	2000	4000	8000	
Fan Only	High	27.4	26.1	33.1	31.6	29.9	22.4	14.6	19.9	33.6
	Medium	27.6	27.8	28.8	26.6	23.0	15.8	12.5	20.7	28.4
	Low	26.9	27.3	24.5	20.9	15.8	11.7	12.3	21.2	24.7
Cool	High	31.5	28.9	38.1	33.2	30.1	23.3	17.0	22.6	35.3
	Medium	32.5	29.0	33.6	29.7	24.2	18.8	15.9	20.9	31.1
	Low	31.9	26.9	31.1	25.9	18.4	15.0	14.0	20.5	27.9
Heat	High	34.3	27.7	34.3	32.9	29.1	24.1	17.0	21.3	34.2
	Medium	33.9	29.0	30.7	30.0	24.3	21.2	16.4	20.7	31.0
	Low	36.6	28.0	28.5	27.7	22.5	20.5	16.7	20.8	29.5

NOTES - The octave sound power data does not include tonal corrections. Sound Rating Number tested according to AHRI Standard 370 (includes pure tone penalty).
 Sound rating Number is the overall A-Weighted Sound Power Level, (LWA), dB (100 Hz to 10,000 Hz).
 63HZ band is not certified and is usually lower than reported.

VOWA009H4

Mode	Fan Speed	Octave Band Sound Power Levels dBA, re 10 ⁻¹² Watts Center Frequency - HZ								Sound Rating Number dBA
		63	125	250	500	1000	2000	4000	8000	
Fan Only	High	32.0	30.2	37.6	37.6	37.6	30.8	21.8	18.3	40.4
	Medium	28.3	27.8	34.3	32.0	32.1	24.6	16.3	19.7	35.1
	Low	30.0	30.9	29.4	26.6	25.0	17.9	14.0	18.3	29.2
Cool	High	44.3	40.7	37.5	34.9	35.5	29.1	20.4	19.2	38.7
	Medium	44.9	43.4	35.1	31.5	30.6	23.9	17.2	20.0	35.3
	Low	44.1	40.8	31.2	26.2	23.3	17.1	14.3	18.9	30.6
Heat	High	48.5	29.8	37.4	38.6	37.6	31.7	22.4	19.7	40.9
	Medium	48.6	28.5	34.6	33.1	31.7	25.7	17.6	19.6	35.7
	Low	48.2	32.1	30.9	27.1	24.6	19.5	15.4	18.8	30.5

NOTES - The octave sound power data does not include tonal corrections. Sound Rating Number tested according to AHRI Standard 370 (includes pure tone penalty).
 Sound rating Number is the overall A-Weighted Sound Power Level, (LWA), dB (100 Hz to 10,000 Hz).
 63HZ band is not certified and is usually lower than reported.

VOWA012H4

Mode	Fan Speed	Octave Band Sound Power Levels dBA, re 10 ⁻¹² Watts Center Frequency - HZ								Sound Rating Number dBA
		63	125	250	500	1000	2000	4000	8000	
Fan Only	High	38.8	33.5	40.8	40.6	40.4	34.5	26.2	19.8	43.5
	Medium	33.4	30.9	36.7	36.7	36.6	29.7	20.8	18.7	39.5
	Low	33.7	27.3	33.3	29.7	29.4	22.0	14.8	18.1	32.8
Cool	High	37.5	34.2	40.3	38.8	38.8	33.9	25.2	21.5	42.1
	Medium	44.0	41.3	36.8	35.3	35.6	28.7	20.3	19.0	38.7
	Low	45.9	31.9	32.8	29.7	28.5	21.4	15.4	19.5	32.7
Heat	High	48.9	33.0	39.6	40.2	40.1	35.8	26.2	19.2	43.4
	Medium	48.8	31.5	37.5	37.9	35.8	30.4	20.8	17.8	39.6
	Low	49.0	26.9	33.4	31.0	28.4	23.5	15.4	17.6	33.4

NOTES - The octave sound power data does not include tonal corrections. Sound Rating Number tested according to AHRI Standard 370 (includes pure tone penalty).
 Sound rating Number is the overall A-Weighted Sound Power Level, (LWA), dB (100 Hz to 10,000 Hz).
 63HZ band is not certified and is usually lower than reported.

SOUND DATA

VOWA015H4

Mode	Fan Speed	Octave Band Sound Power Levels dBA, re 10 ⁻¹² Watts Center Frequency - HZ								Sound Rating Number dBA
		63	125	250	500	1000	2000	4000	8000	
Fan Only	High	34.1	38.3	41.5	36.9	37.4	28.4	20.0	19.3	40.4
	Medium	33.0	37.2	39.5	35.2	35.1	25.2	17.2	19.4	38.2
	Low	29.4	35.3	37.0	33.5	32.2	22.2	14.9	18.5	35.8
Cool	High	38.8	38.7	42.0	36.0	37.2	28.9	21.6	20.9	40.3
	Medium	38.6	34.4	40.8	33.2	34.7	25.7	18.7	19.6	38
	Low	38.1	31.2	39.4	31.1	32.1	22.7	16.5	17.9	35.9
Heat	High	39.2	35.9	41.7	37.7	37.6	29.0	21.4	19.6	40.8
	Medium	43.0	34.1	39.7	35.9	35.1	25.8	19.3	19.4	38.5
	Low	39.7	31.7	37.2	33.3	32.5	23.2	18.1	19.1	36

NOTES - The octave sound power data does not include tonal corrections. Sound Rating Number tested according to AHRI Standard 370 (includes pure tone penalty).
Sound rating Number is the overall A-Weighted Sound Power Level, (LWA), dB (100 Hz to 10,000 Hz).
63HZ band is not certified and is usually lower than reported.

VOWA018H4

Mode	Fan Speed	Octave Band Sound Power Levels dBA, re 10 ⁻¹² Watts Center Frequency - HZ								Sound Rating Number dBA
		63	125	250	500	1000	2000	4000	8000	
Fan	High	46.4	43.6	46.9	41.7	42.4	34.8	27.3	19.1	45.6
	Medium	37.0	40.0	44.4	39.3	39.9	31.6	23.6	19.3	43.1
	Low	32.4	37.9	42.1	37.4	37.6	28.8	20.6	17.8	40.8
Cool	High	52.2	46.8	46.6	40.7	42.5	34.6	27.5	21.8	45.5
	Medium	52.0	40.9	44.4	38.6	39.9	31.6	24.1	20.0	43
	Low	51.7	40.3	42.2	36.5	37.5	28.8	21.1	20.1	40.7
Heat	High	44.3	41.5	46.5	41.6	42.4	34.9	28.0	22.1	45.5
	Medium	40.3	39.8	44.0	39.5	40.3	32.0	24.8	20.9	43.3
	Low	40.1	39.1	41.6	37.8	37.9	28.9	22.1	20.3	41

NOTES - The octave sound power data does not include tonal corrections. Sound Rating Number tested according to AHRI Standard 370 (includes pure tone penalty).
Sound rating Number is the overall A-Weighted Sound Power Level, (LWA), dB (100 Hz to 10,000 Hz).
63HZ band is not certified and is usually lower than reported.

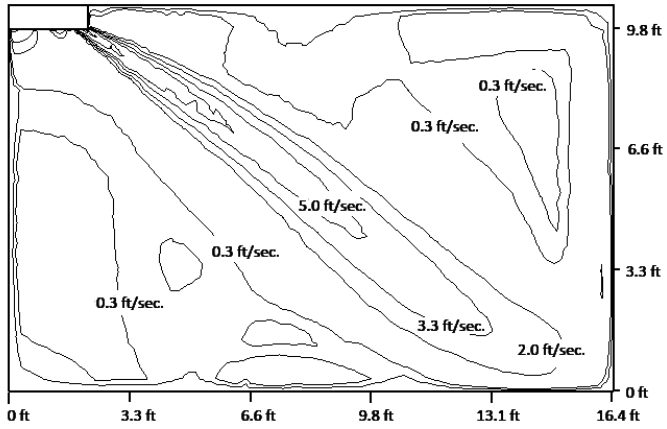
VOWA024H4

Mode	Fan Speed	Octave Band Sound Power Levels dBA, re 10 ⁻¹² Watts Center Frequency - HZ								Sound Rating Number dBA
		63	125	250	500	1000	2000	4000	8000	
Fan Only	High	34.5	41.8	47.6	41.9	41.0	33.7	26.1	20.4	45
	Medium	32.3	39.9	44.9	38.5	38.7	30.5	22.5	21.5	42.3
	Low	31.4	35.9	41.1	35.0	35.0	26.2	18.1	21.1	38.6
Cool	High	36.2	43.7	48.1	42.0	41.8	34.1	26.8	22.9	45.5
	Medium	36.3	40.3	45.9	39.1	39.4	31.1	24.7	22.8	43.1
	Low	35.6	37.0	42.6	34.9	35.6	26.4	19.1	19.3	39.3
Heat	High	36.8	41.3	46.5	41.4	41.2	34.2	26.0	20.8	44.8
	Medium	36.5	38.9	44.4	39.5	38.8	31.2	23.0	21.8	42.5
	Low	35.1	36.1	40.7	36.8	35.8	27.3	20.1	20.4	39.3

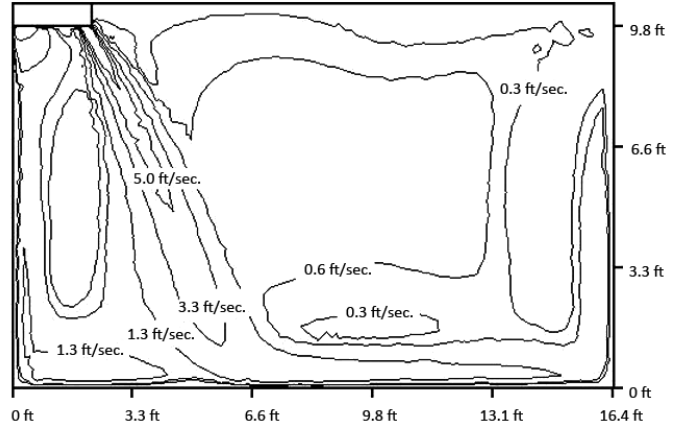
NOTES - The octave sound power data does not include tonal corrections. Sound Rating Number tested according to AHRI Standard 370 (includes pure tone penalty).
Sound rating Number is the overall A-Weighted Sound Power Level, (LWA), dB (100 Hz to 10,000 Hz).
63HZ band is not certified and is usually lower than reported.

AIR THROW DATA

COOLING MODE



HEATING MODE



COOLING CAPACITY

Size	Outdoor Temperature °F (Dry Bulb)	Indoor Temperature - °F (Dry Bulb / Wet Bulb)											
		67 / 57		71 / 60		75 / 63		80 / 67		85 / 71		90 / 75	
		Total	Sensible	Total	Sensible	Total	Sensible	Total	Sensible	Total	Sensible	Total	Sensible
		MBH	MBH	MBH	MBH	MBH	MBH	MBH	MBH	MBH	MBH	MBH	MBH
007	-10	4.11	2.96	4.98	3.67	5.84	4.40	7.00	5.33	8.16	6.17	9.31	7.11
	5	4.11	2.96	4.98	3.67	5.84	4.40	7.00	5.33	8.16	6.17	9.31	7.11
	10	4.11	2.96	4.98	3.67	5.84	4.40	7.00	5.33	8.16	6.17	9.31	7.11
	15	4.11	2.96	4.98	3.67	5.84	4.40	7.00	5.33	8.16	6.17	9.28	7.09
	20	4.11	2.96	4.98	3.67	5.84	4.40	7.00	5.33	8.16	6.17	9.15	6.99
	25	4.11	2.96	4.98	3.67	5.84	4.40	7.00	5.33	8.16	6.17	9.01	6.88
	30	4.11	2.96	4.98	3.67	5.84	4.40	7.00	5.33	8.16	6.17	8.88	6.78
	35	4.11	2.96	4.98	3.67	5.84	4.40	7.00	5.33	8.16	6.17	8.75	6.68
	40	4.11	2.96	4.98	3.67	5.84	4.40	7.00	5.33	8.16	6.17	8.61	6.58
	45	4.11	2.96	4.98	3.67	5.84	4.40	7.00	5.33	8.16	6.17	8.48	6.47
	50	4.11	2.96	4.98	3.67	5.84	4.40	7.00	5.33	8.16	6.17	8.34	6.37
	55	4.11	2.96	4.98	3.67	5.84	4.40	7.00	5.33	8.14	6.16	8.21	6.27
	60	4.11	2.96	4.98	3.67	5.84	4.40	7.00	5.33	8.01	6.06	8.07	6.17
	65	4.11	2.96	4.98	3.67	5.84	4.40	7.00	5.33	7.87	5.96	7.94	6.06
	70	4.11	2.96	4.98	3.67	5.84	4.40	7.00	5.33	7.74	5.86	7.81	5.96
	75	4.11	2.96	4.98	3.67	5.84	4.40	7.00	5.33	7.60	5.76	7.67	5.86
	80	4.11	2.96	4.98	3.67	5.84	4.40	7.00	5.33	7.47	5.65	7.54	5.75
	85	4.11	2.96	4.98	3.67	5.84	4.40	7.00	5.33	7.34	5.55	7.40	5.65
	90	4.11	2.96	4.98	3.67	5.84	4.40	7.00	5.33	7.20	5.45	7.27	5.55
	95	4.11	2.96	4.98	3.67	5.84	4.40	7.00	5.33	7.07	5.35	7.13	5.45
100	4.11	2.96	4.98	3.67	5.84	4.40	6.87	5.23	6.93	5.25	7.00	5.34	
105	4.11	2.96	4.98	3.67	5.84	4.40	6.73	5.12	6.78	5.13	6.79	5.18	
110	4.11	2.96	4.98	3.67	5.84	4.40	6.33	4.82	6.48	4.91	6.58	5.02	
115	4.11	2.96	4.76	3.51	4.88	3.68	5.03	3.83	5.19	3.93	5.34	4.08	
118	3.65	2.63	3.98	2.94	4.10	3.09	4.25	3.24	4.41	3.34	4.56	3.48	
125	2.08	1.50	2.20	1.62	2.32	1.75	2.47	1.88	2.63	1.99	2.78	2.12	
009	-10	5.28	3.75	6.40	4.65	7.51	5.59	9.00	6.76	10.49	7.83	11.98	9.02
	5	5.28	3.75	6.40	4.65	7.51	5.59	9.00	6.76	10.49	7.83	11.98	9.02
	10	5.28	3.75	6.40	4.65	7.51	5.59	9.00	6.76	10.49	7.83	11.98	9.02
	15	5.28	3.75	6.40	4.65	7.51	5.59	9.00	6.76	10.49	7.83	11.93	8.99
	20	5.28	3.75	6.40	4.65	7.51	5.59	9.00	6.76	10.49	7.83	11.77	8.86
	25	5.28	3.75	6.40	4.65	7.51	5.59	9.00	6.76	10.49	7.83	11.59	8.73
	30	5.28	3.75	6.40	4.65	7.51	5.59	9.00	6.76	10.49	7.83	11.42	8.60
	35	5.28	3.75	6.40	4.65	7.51	5.59	9.00	6.76	10.49	7.83	11.25	8.47
	40	5.28	3.75	6.40	4.65	7.51	5.59	9.00	6.76	10.49	7.83	11.07	8.34
	45	5.28	3.75	6.40	4.65	7.51	5.59	9.00	6.76	10.49	7.83	10.90	8.21
	50	5.28	3.75	6.40	4.65	7.51	5.59	9.00	6.76	10.49	7.83	10.73	8.08
	55	5.28	3.75	6.40	4.65	7.51	5.59	9.00	6.76	10.47	7.82	10.55	7.95
	60	5.28	3.75	6.40	4.65	7.51	5.59	9.00	6.76	10.30	7.69	10.38	7.82
	65	5.28	3.75	6.40	4.65	7.51	5.59	9.00	6.76	10.12	7.56	10.21	7.69
	70	5.28	3.75	6.40	4.65	7.51	5.59	9.00	6.76	9.95	7.43	10.04	7.56
	75	5.28	3.75	6.40	4.65	7.51	5.59	9.00	6.76	9.78	7.30	9.86	7.43
	80	5.28	3.75	6.40	4.65	7.51	5.59	9.00	6.76	9.60	7.17	9.69	7.30
	85	5.28	3.75	6.40	4.65	7.51	5.59	9.00	6.76	9.43	7.04	9.52	7.17
	90	5.28	3.75	6.40	4.65	7.51	5.59	9.00	6.76	9.26	6.91	9.35	7.04
	95	5.28	3.75	6.40	4.65	7.51	5.59	9.00	6.76	9.09	6.78	9.17	6.91
100	5.28	3.75	6.40	4.65	7.51	5.59	8.83	6.63	8.91	6.66	8.99	6.77	
105	5.28	3.75	6.40	4.65	7.51	5.59	8.65	6.50	8.71	6.51	8.72	6.57	
110	5.28	3.75	6.40	4.65	7.51	5.59	8.14	6.11	8.34	6.22	8.46	6.37	
115	5.28	3.75	6.12	4.45	6.27	4.66	6.47	4.86	6.67	4.98	6.87	5.18	
118	4.69	3.33	5.12	3.72	5.27	3.92	5.47	4.10	5.67	4.23	5.87	4.42	
125	2.68	1.90	2.83	2.06	2.98	2.21	3.18	2.39	3.38	2.52	3.58	2.69	

NOTE - MBH = 1000 BTUs per hour.

COOLING CAPACITY

Size	Outdoor Temperature °F (Dry Bulb)	Indoor Temperature - °F (Dry Bulb / Wet Bulb)											
		67 / 57		71 / 60		75 / 63		80 / 67		85 / 71		90 / 75	
		Total	Sensible	Total	Sensible	Total	Sensible	Total	Sensible	Total	Sensible	Total	Sensible
		MBH	MBH	MBH	MBH	MBH	MBH	MBH	MBH	MBH	MBH	MBH	MBH
012	-10	7.04	5.00	8.53	6.21	10.02	7.45	12.00	9.01	13.98	10.44	15.97	12.03
	5	7.04	5.00	8.53	6.21	10.02	7.45	12.00	9.01	13.98	10.44	15.97	12.03
	10	7.04	5.00	8.53	6.21	10.02	7.45	12.00	9.01	13.98	10.44	15.97	12.03
	15	7.04	5.00	8.53	6.21	10.02	7.45	12.00	9.01	13.98	10.44	15.91	11.98
	20	7.04	5.00	8.53	6.21	10.02	7.45	12.00	9.01	13.98	10.44	15.69	11.82
	25	7.04	5.00	8.53	6.21	10.02	7.45	12.00	9.01	13.98	10.44	15.45	11.64
	30	7.04	5.00	8.53	6.21	10.02	7.45	12.00	9.01	13.98	10.44	15.22	11.47
	35	7.04	5.00	8.53	6.21	10.02	7.45	12.00	9.01	13.98	10.44	14.99	11.29
	40	7.04	5.00	8.53	6.21	10.02	7.45	12.00	9.01	13.98	10.44	14.76	11.12
	45	7.04	5.00	8.53	6.21	10.02	7.45	12.00	9.01	13.98	10.44	14.53	10.95
	50	7.04	5.00	8.53	6.21	10.02	7.45	12.00	9.01	13.98	10.44	14.30	10.77
	55	7.04	5.00	8.53	6.21	10.02	7.45	12.00	9.01	13.96	10.42	14.07	10.60
	60	7.04	5.00	8.53	6.21	10.02	7.45	12.00	9.01	13.73	10.25	13.84	10.43
	65	7.04	5.00	8.53	6.21	10.02	7.45	12.00	9.01	13.50	10.08	13.61	10.25
	70	7.04	5.00	8.53	6.21	10.02	7.45	12.00	9.01	13.27	9.91	13.38	10.08
	75	7.04	5.00	8.53	6.21	10.02	7.45	12.00	9.01	13.04	9.73	13.15	9.91
	80	7.04	5.00	8.53	6.21	10.02	7.45	12.00	9.01	12.81	9.56	12.92	9.73
	85	7.04	5.00	8.53	6.21	10.02	7.45	12.00	9.01	12.58	9.39	12.69	9.56
	90	7.04	5.00	8.53	6.21	10.02	7.45	12.00	9.01	12.35	9.22	12.46	9.39
	95	7.04	5.00	8.53	6.21	10.02	7.45	12.00	9.01	12.12	9.05	12.23	9.21
100	7.04	5.00	8.53	6.21	10.02	7.45	11.77	8.84	11.89	8.87	11.99	9.03	
105	7.04	5.00	8.53	6.21	10.02	7.45	11.54	8.67	11.62	8.67	11.63	8.76	
110	7.04	5.00	8.53	6.21	10.02	7.45	10.85	8.15	11.12	8.30	11.27	8.49	
115	7.04	5.00	8.16	5.94	8.36	6.22	8.63	6.48	8.89	6.64	9.16	6.90	
118	6.25	4.51	6.82	5.03	7.02	5.29	7.29	5.55	7.56	5.72	7.82	5.97	
125	3.57	2.54	3.77	2.74	3.97	2.95	4.24	3.18	4.50	3.36	4.77	3.59	
015	-10	8.80	6.34	10.66	7.87	12.52	9.44	15.00	11.42	17.48	13.23	19.96	15.24
	5	8.80	6.34	10.66	7.87	12.52	9.44	15.00	11.42	17.48	13.23	19.96	15.24
	10	8.80	6.34	10.66	7.87	12.52	9.44	15.00	11.42	17.48	13.23	19.96	15.24
	15	8.80	6.34	10.66	7.87	12.52	9.44	15.00	11.42	17.48	13.23	19.89	15.18
	20	8.80	6.34	10.66	7.87	12.52	9.44	15.00	11.42	17.48	13.23	19.61	14.97
	25	8.80	6.34	10.66	7.87	12.52	9.44	15.00	11.42	17.48	13.23	19.32	14.75
	30	8.80	6.34	10.66	7.87	12.52	9.44	15.00	11.42	17.48	13.23	19.03	14.53
	35	8.80	6.34	10.66	7.87	12.52	9.44	15.00	11.42	17.48	13.23	18.74	14.31
	40	8.80	6.34	10.66	7.87	12.52	9.44	15.00	11.42	17.48	13.23	18.45	14.09
	45	8.80	6.34	10.66	7.87	12.52	9.44	15.00	11.42	17.48	13.23	18.17	13.87
	50	8.80	6.34	10.66	7.87	12.52	9.44	15.00	11.42	17.48	13.23	17.88	13.65
	55	8.80	6.34	10.66	7.87	12.52	9.44	15.00	11.42	17.45	13.20	17.59	13.43
	60	8.80	6.34	10.66	7.87	12.52	9.44	15.00	11.42	17.16	12.99	17.30	13.21
	65	8.80	6.34	10.66	7.87	12.52	9.44	15.00	11.42	16.87	12.77	17.02	12.99
	70	8.80	6.34	10.66	7.87	12.52	9.44	15.00	11.42	16.58	12.55	16.73	12.77
	75	8.80	6.34	10.66	7.87	12.52	9.44	15.00	11.42	16.30	12.33	16.44	12.55
	80	8.80	6.34	10.66	7.87	12.52	9.44	15.00	11.42	16.01	12.12	16.15	12.33
	85	8.80	6.34	10.66	7.87	12.52	9.44	15.00	11.42	15.72	11.90	15.86	12.11
	90	8.80	6.34	10.66	7.87	12.52	9.44	15.00	11.42	15.43	11.68	15.58	11.89
	95	8.80	6.34	10.66	7.87	12.52	9.44	15.00	11.42	15.14	11.46	15.29	11.67
100	8.80	6.34	10.66	7.87	12.52	9.44	14.71	11.20	14.86	11.24	14.99	11.45	
105	8.80	6.34	10.66	7.87	12.52	9.44	14.42	10.98	14.52	10.99	14.54	11.10	
110	8.80	6.34	10.66	7.87	12.52	9.44	13.56	10.32	13.90	10.52	14.09	10.76	
115	8.80	6.34	10.20	7.53	10.45	7.88	10.78	8.21	11.12	8.41	11.45	8.74	
118	7.82	5.63	8.53	6.29	8.78	6.62	9.11	6.93	9.44	7.15	9.78	7.46	
125	4.46	3.22	4.71	3.48	4.96	3.74	5.30	4.03	5.63	4.26	5.96	4.55	

NOTE - MBH = 1000 BTUs per hour.

COOLING CAPACITY

Size	Outdoor Temperature °F (Dry Bulb)	Indoor Temperature - °F (Dry Bulb / Wet Bulb)											
		67 / 57		71 / 60		75 / 63		80 / 67		85 / 71		90 / 75	
		Total	Sensible	Total	Sensible	Total	Sensible	Total	Sensible	Total	Sensible	Total	Sensible
	MBH	MBH	MBH	MBH	MBH	MBH	MBH	MBH	MBH	MBH	MBH	MBH	MBH
018	-10	10.56	7.61	12.79	9.44	15.02	11.33	18.00	13.70	20.98	15.88	23.95	18.29
	5	10.56	7.61	12.79	9.44	15.02	11.33	18.00	13.70	20.98	15.88	23.95	18.29
	10	10.56	7.61	12.79	9.44	15.02	11.33	18.00	13.70	20.98	15.88	23.95	18.29
	15	10.56	7.61	12.79	9.44	15.02	11.33	18.00	13.70	20.98	15.88	23.87	18.23
	20	10.56	7.61	12.79	9.44	15.02	11.33	18.00	13.70	20.98	15.88	23.53	17.96
	25	10.56	7.61	12.79	9.44	15.02	11.33	18.00	13.70	20.98	15.88	23.18	17.70
	30	10.56	7.61	12.79	9.44	15.02	11.33	18.00	13.70	20.98	15.88	22.84	17.43
	35	10.56	7.61	12.79	9.44	15.02	11.33	18.00	13.70	20.98	15.88	22.49	17.17
	40	10.56	7.61	12.79	9.44	15.02	11.33	18.00	13.70	20.98	15.88	22.14	16.91
	45	10.56	7.61	12.79	9.44	15.02	11.33	18.00	13.70	20.98	15.88	21.80	16.64
	50	10.56	7.61	12.79	9.44	15.02	11.33	18.00	13.70	20.98	15.88	21.45	16.38
	55	10.56	7.61	12.79	9.44	15.02	11.33	18.00	13.70	20.94	15.85	21.11	16.12
	60	10.56	7.61	12.79	9.44	15.02	11.33	18.00	13.70	20.59	15.58	20.76	15.85
	65	10.56	7.61	12.79	9.44	15.02	11.33	18.00	13.70	20.25	15.32	20.42	15.59
	70	10.56	7.61	12.79	9.44	15.02	11.33	18.00	13.70	19.90	15.06	20.07	15.33
	75	10.56	7.61	12.79	9.44	15.02	11.33	18.00	13.70	19.55	14.80	19.73	15.06
	80	10.56	7.61	12.79	9.44	15.02	11.33	18.00	13.70	19.21	14.54	19.38	14.80
	85	10.56	7.61	12.79	9.44	15.02	11.33	18.00	13.70	18.86	14.28	19.04	14.53
	90	10.56	7.61	12.79	9.44	15.02	11.33	18.00	13.70	18.52	14.02	18.69	14.27
	95	10.56	7.61	12.79	9.44	15.02	11.33	18.00	13.70	18.17	13.75	18.35	14.01
100	10.56	7.61	12.79	9.44	15.02	11.33	17.65	13.44	17.83	13.49	17.99	13.73	
105	10.56	7.61	12.79	9.44	15.02	11.33	17.31	13.18	17.43	13.19	17.45	13.32	
110	10.56	7.61	12.79	9.44	15.02	11.33	16.27	12.39	16.67	12.62	16.91	12.91	
115	10.56	7.61	12.24	9.03	12.54	9.45	12.94	9.85	13.34	10.10	13.74	10.49	
118	9.38	6.76	10.23	7.55	10.53	7.94	10.93	8.32	11.33	8.58	11.73	8.96	
125	5.35	3.86	5.65	4.17	5.95	4.49	6.35	4.84	6.75	5.11	7.15	5.46	
024	-10	14.08	10.15	17.06	12.59	20.03	15.10	24.00	18.27	27.97	21.17	31.93	24.38
	5	14.08	10.15	17.06	12.59	20.03	15.10	24.00	18.27	27.97	21.17	31.93	24.38
	10	14.08	10.15	17.06	12.59	20.03	15.10	24.00	18.27	27.97	21.17	31.93	24.38
	15	14.08	10.15	17.06	12.59	20.03	15.10	24.00	18.27	27.97	21.17	31.82	24.30
	20	14.08	10.15	17.06	12.59	20.03	15.10	24.00	18.27	27.97	21.17	31.37	23.95
	25	14.08	10.15	17.06	12.59	20.03	15.10	24.00	18.27	27.97	21.17	30.91	23.60
	30	14.08	10.15	17.06	12.59	20.03	15.10	24.00	18.27	27.97	21.17	30.45	23.25
	35	14.08	10.15	17.06	12.59	20.03	15.10	24.00	18.27	27.97	21.17	29.99	22.89
	40	14.08	10.15	17.06	12.59	20.03	15.10	24.00	18.27	27.97	21.17	29.53	22.54
	45	14.08	10.15	17.06	12.59	20.03	15.10	24.00	18.27	27.97	21.17	29.07	22.19
	50	14.08	10.15	17.06	12.59	20.03	15.10	24.00	18.27	27.97	21.17	28.61	21.84
	55	14.08	10.15	17.06	12.59	20.03	15.10	24.00	18.27	27.91	21.13	28.15	21.49
	60	14.08	10.15	17.06	12.59	20.03	15.10	24.00	18.27	27.45	20.78	27.68	21.14
	65	14.08	10.15	17.06	12.59	20.03	15.10	24.00	18.27	26.99	20.43	27.22	20.79
	70	14.08	10.15	17.06	12.59	20.03	15.10	24.00	18.27	26.53	20.08	26.76	20.43
	75	14.08	10.15	17.06	12.59	20.03	15.10	24.00	18.27	26.07	19.73	26.30	20.08
	80	14.08	10.15	17.06	12.59	20.03	15.10	24.00	18.27	25.61	19.39	25.84	19.73
	85	14.08	10.15	17.06	12.59	20.03	15.10	24.00	18.27	25.15	19.04	25.38	19.38
	90	14.08	10.15	17.06	12.59	20.03	15.10	24.00	18.27	24.69	18.69	24.92	19.03
	95	14.08	10.15	17.06	12.59	20.03	15.10	24.00	18.27	24.23	18.34	24.46	18.68
100	14.08	10.15	17.06	12.59	20.03	15.10	23.54	17.92	23.77	17.99	23.99	18.31	
105	14.08	10.15	17.06	12.59	20.03	15.10	23.08	17.57	23.23	17.59	23.27	17.76	
110	14.08	10.15	17.06	12.59	20.03	15.10	21.70	16.52	22.23	16.83	22.55	17.21	
115	14.08	10.15	16.32	12.04	16.72	12.61	17.25	13.13	17.79	13.46	18.32	13.99	
118	12.51	9.01	13.64	10.07	14.04	10.59	14.58	11.10	15.11	11.44	15.64	11.94	
125	7.14	5.14	7.54	5.56	7.94	5.98	8.47	6.45	9.01	6.82	9.54	7.28	

NOTE - MBH = 1000 BTUs per hour.

HEATING CAPACITY

Size	Outdoor Temperature (°F)		Indoor Temperature - °F (Dry Bulb)					
			61	64	67	70	73	75
	Dry Bulb	Wet Bulb	Total Capacity					
			MBH	MBH	MBH	MBH	MBH	MBH
007	-13	-14	3.61	3.45	3.29	3.13	2.96	2.85
	-8	-9	4.04	3.88	3.72	3.55	3.39	3.28
	-3	-4	4.47	4.31	4.14	3.98	3.82	3.71
	2	1	4.90	4.73	4.57	4.41	4.25	4.14
	7	6	5.32	5.16	5.00	4.84	4.67	4.56
	12	10	5.67	5.50	5.34	5.18	5.02	4.91
	17	15	6.09	5.93	5.77	5.61	5.44	5.33
	22	20	6.52	6.36	6.20	6.03	5.87	5.76
	27	24	6.86	6.70	6.54	6.38	6.21	6.10
	32	29	7.29	7.13	6.97	6.80	6.64	6.53
	37	34	7.72	7.56	7.39	7.23	7.07	6.96
	42	38	8.06	7.90	7.74	7.57	7.41	7.07
	47	43	8.49	8.33	8.16	8.00	7.44	7.07
	52	47	8.83	8.67	8.51	8.00	7.44	7.07
	57	52	9.26	9.10	8.56	8.00	7.44	7.07
	62	56	9.60	9.12	8.56	8.00	7.44	7.07
	67	61	9.67	9.12	8.56	8.00	7.44	7.07
72	66	9.67	9.12	8.56	8.00	7.44	7.07	
75	69	9.67	9.12	8.56	8.00	7.44	7.07	
80	74	9.67	9.12	8.56	8.00	7.44	7.07	
009	-13	-14	4.52	4.31	4.11	3.91	3.70	3.57
	-8	-9	5.05	4.85	4.64	4.44	4.24	4.10
	-3	-4	5.59	5.38	5.18	4.98	4.77	4.64
	2	1	6.12	5.92	5.71	5.51	5.31	5.17
	7	6	6.66	6.45	6.25	6.05	5.84	5.71
	12	10	7.08	6.88	6.68	6.47	6.27	6.13
	17	15	7.62	7.41	7.21	7.01	6.80	6.67
	22	20	8.15	7.95	7.75	7.54	7.34	7.20
	27	24	8.58	8.38	8.17	7.97	7.77	7.63
	32	29	9.12	8.91	8.71	8.50	8.30	8.17
	37	34	9.65	9.45	9.24	9.04	8.84	8.70
	42	38	10.08	9.87	9.67	9.47	9.26	8.84
	47	43	10.61	10.41	10.21	10.00	9.30	8.84
	52	47	11.04	10.84	10.63	10.00	9.30	8.84
	57	52	11.58	11.37	10.70	10.00	9.30	8.84
	62	56	12.00	11.40	10.70	10.00	9.30	8.84
	67	61	12.09	11.40	10.70	10.00	9.30	8.84
72	66	12.09	11.40	10.70	10.00	9.30	8.84	
75	69	12.09	11.40	10.70	10.00	9.30	8.84	
80	74	12.09	11.40	10.70	10.00	9.30	8.84	

NOTE - MBH = 1000 BTUs per hour.

HEATING CAPACITY

Size	Outdoor Temperature (°F)		Indoor Temperature - °F (Dry Bulb)					
			61	64	67	70	73	75
	Dry Bulb	Wet Bulb	Total Capacity					
			MBH	MBH	MBH	MBH	MBH	MBH
012	-13	-14	5.30	5.03	4.75	4.48	4.21	4.02
	-8	-9	6.10	5.82	5.55	5.27	5.00	4.81
	-3	-4	6.89	6.61	6.34	6.06	5.79	5.60
	2	1	7.68	7.40	7.13	6.85	6.58	6.40
	7	6	8.47	8.20	7.92	7.65	7.37	7.19
	12	10	9.10	8.83	8.55	8.28	8.00	7.82
	17	15	9.89	9.62	9.35	9.07	8.80	8.61
	22	20	10.69	10.41	10.14	9.86	9.59	9.40
	27	24	11.32	11.04	10.77	10.50	10.22	10.04
	32	29	12.11	11.84	11.56	11.29	11.01	10.83
	37	34	12.90	12.63	12.35	12.08	11.80	11.62
	42	38	13.54	13.26	12.99	12.71	12.44	11.93
	47	43	14.33	14.05	13.78	13.50	12.56	11.93
	52	47	14.96	14.69	14.41	13.50	12.56	11.93
	57	52	15.75	15.38	14.44	13.50	12.56	11.93
	62	56	16.33	15.38	14.44	13.50	12.56	11.93
	67	61	16.33	15.38	14.44	13.50	12.56	11.93
	72	66	16.33	15.38	14.44	13.50	12.56	11.93
75	69	16.33	15.38	14.44	13.50	12.56	11.93	
80	74	16.33	15.38	14.44	13.50	12.56	11.93	
015	-13	-14	7.68	7.33	6.99	6.64	6.29	6.06
	-8	-9	8.59	8.24	7.90	7.55	7.20	6.97
	-3	-4	9.50	9.15	8.80	8.46	8.11	7.88
	2	1	10.41	10.06	9.71	9.37	9.02	8.79
	7	6	11.31	10.97	10.62	10.28	9.93	9.70
	12	10	12.04	11.70	11.35	11.00	10.66	10.43
	17	15	12.95	12.61	12.26	11.91	11.57	11.34
	22	20	13.86	13.51	13.17	12.82	12.48	12.25
	27	24	14.59	14.24	13.90	13.55	13.20	12.97
	32	29	15.50	15.15	14.80	14.46	14.11	13.88
	37	34	16.41	16.06	15.71	15.37	15.02	14.79
	42	38	17.13	16.79	16.44	16.09	15.75	15.02
	47	43	18.04	17.70	17.35	17.00	15.81	15.02
	52	47	18.77	18.42	18.08	17.00	15.81	15.02
	57	52	19.68	19.33	18.19	17.00	15.81	15.02
	62	56	20.40	19.37	18.19	17.00	15.81	15.02
	67	61	20.56	19.37	18.19	17.00	15.81	15.02
	72	66	20.56	19.37	18.19	17.00	15.81	15.02
75	69	20.56	19.37	18.19	17.00	15.81	15.02	
80	74	20.56	19.37	18.19	17.00	15.81	15.02	

NOTE - MBH = 1000 BTUs per hour.

HEATING CAPACITY

Size	Outdoor Temperature (°F)		Indoor Temperature - °F (Dry Bulb)					
			61	64	67	70	73	75
	Dry Bulb	Wet Bulb	Total Capacity					
		MBH	MBH	MBH	MBH	MBH	MBH	
018	-13	-14	9.49	9.06	8.63	8.20	7.78	7.49
	-8	-9	10.61	10.18	9.75	9.33	8.90	8.61
	-3	-4	11.73	11.30	10.88	10.45	10.02	9.74
	2	1	12.85	12.43	12.00	11.57	11.14	10.86
	7	6	13.98	13.55	13.12	12.70	12.27	11.98
	12	10	14.88	14.45	14.02	13.59	13.17	12.88
	17	15	16.00	15.57	15.14	14.72	14.29	14.00
	22	20	17.12	16.69	16.27	15.84	15.41	15.13
	27	24	18.02	17.59	17.16	16.74	16.31	16.03
	32	29	19.14	18.72	18.29	17.86	17.43	17.15
	37	34	20.27	19.84	19.41	18.98	18.56	18.27
	42	38	21.16	20.74	20.31	19.88	19.45	18.56
	47	43	22.29	21.86	21.43	21.00	19.53	18.56
	52	47	23.18	22.76	22.33	21.00	19.53	18.56
	57	52	24.31	23.88	22.47	21.00	19.53	18.56
	62	56	25.21	23.93	22.47	21.00	19.53	18.56
	67	61	25.40	23.93	22.47	21.00	19.53	18.56
72	66	25.40	23.93	22.47	21.00	19.53	18.56	
75	69	25.40	23.93	22.47	21.00	19.53	18.56	
80	74	25.40	23.93	22.47	21.00	19.53	18.56	
024	-13	-14	12.95	12.40	11.85	11.30	10.75	10.38
	-8	-9	14.23	13.69	13.14	12.59	12.04	11.67
	-3	-4	15.54	14.99	14.44	13.89	13.34	12.98
	2	1	16.87	16.32	15.77	15.22	14.67	14.30
	7	6	18.21	17.66	17.11	16.56	16.01	15.65
	12	10	19.30	18.75	18.20	17.65	17.10	16.73
	17	15	20.67	20.12	19.57	19.02	18.47	18.11
	22	20	22.06	21.51	20.97	20.42	19.87	19.50
	27	24	23.19	22.64	22.09	21.54	20.99	20.63
	32	29	24.61	24.07	23.52	22.97	22.42	22.05
	37	34	26.06	25.51	24.96	24.41	23.86	23.49
	42	38	27.22	26.67	26.12	25.57	25.03	23.86
	47	43	28.70	28.15	27.60	27.00	25.12	23.86
	52	47	29.89	29.34	28.79	27.00	25.12	23.86
	57	52	31.39	30.77	28.88	27.00	25.12	23.86
	62	56	32.61	30.77	28.88	27.00	25.12	23.86
	67	61	32.65	30.77	28.88	27.00	25.12	23.86
72	66	32.65	30.77	28.88	27.00	25.12	23.86	
75	69	32.65	30.77	28.88	27.00	25.12	23.86	
80	74	32.65	30.77	28.88	27.00	25.12	23.86	

NOTE - MBH = 1000 BTUs per hour.



Visit us at www.Lennox.com

For the latest technical information, www.LennoxCommercial.com

Contact us at 1-800-4-LENNOX



NOTE - Due to Lennox' ongoing commitment to quality, Specifications, Ratings and Dimensions subject to change without notice and without incurring liability.
Improper installation, adjustment, alteration, service or maintenance can cause property damage or personal injury.
Installation and service must be performed by a qualified installer and servicing agency.

©2019 Lennox Industries, Inc.