

538145-04
01

02

03

04

05

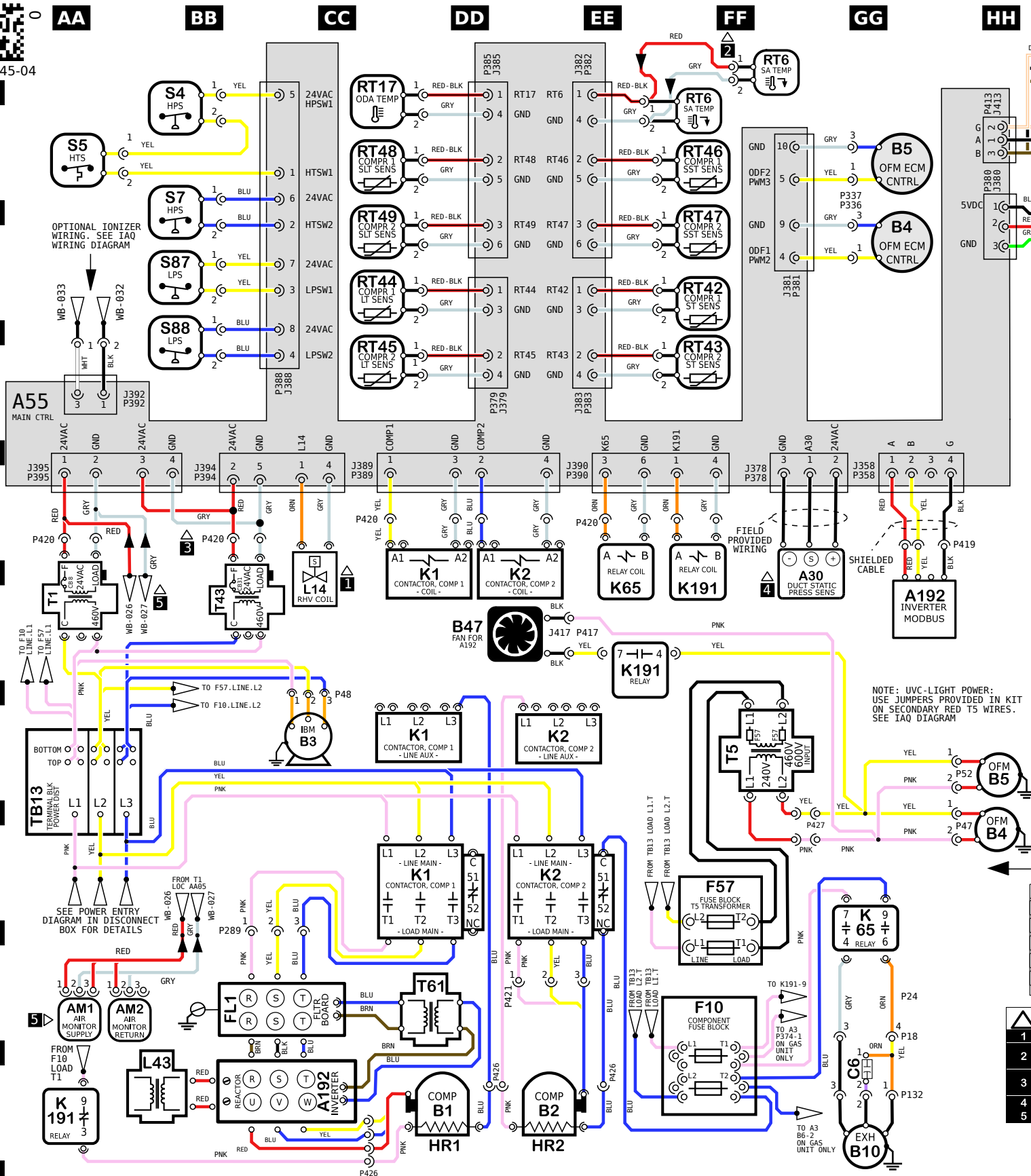
06

07

08

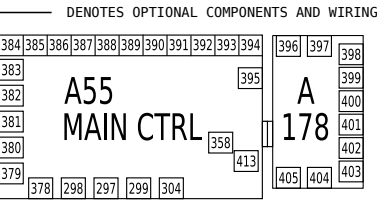
09

10



KEY LIST		
LOCATION	COMPONENT DESCRIPTION	
FF05	A30	SENSOR, DUCT STATIC PRESSURE
GG05, BB09	A192	INVERTER, COMPRESSOR 1
DD/EE10	B1, B2	COMPRESSOR 1, 2
CC06, JJ01	B3	MOTOR, BLOWER
GG02, HH07	B4, B5	MOTOR, OUTDOOR FAN 1, 2
GG10	B10	MOTOR, EXHAUST FAN 1
DD05	B47	MOTOR, COOLING FAN FOR A192
GG09	C6	CAPACITOR, EXHAUST FAN 1
FF09	F10	FUSE, COMPONENT
FF08	F57	FUSE, T5 TRANSFORMER
BB09	FL1	FILTER BOARD
DD/EE10	HR1, HR2	HEATER, COMPRESSOR 1, 2
DD/EE05, 06, 08	K1, K2	CONTACTOR, COMPRESSOR 1, 2
EE05, GG08	K65	RELAY, EXHAUST FAN 1
AA09, FF05, EE06	K191	RELAY, CRANKCASE HEATER 1
CC05	L14	VALVE, SOLENOID, REHEAT COIL 1, 2
BB09	L43	REACTOR INVERTER
HH02	PT6	PRESSURE TRANSDUCER, EBM MOTOR
FF01	RT6	SENSOR, A55 DISCHARGE (IMC)
CC01	RT17	SENSOR, OUTSIDE AIR TEMP
FF03	RT42, RT43	SENSOR, SUCTION TEMP., COMP 1, 2
CC03	RT44, RT45	SENSOR, LIQUID TEMP., COMP 1, 2
FF02	RT46, RT47	SENSOR, SAT. SUCT TEMP., COMP 1, 2
CC02	RT48, RT49	SENSOR, SAT. LIQUID TEMP., COMP 1, 2
BB01/02	S4, S7	LIMIT, HI PRESS. SWITCH, COMP 1, 2
AA02	S5	LIMIT, HI TEMP. SWITCH, COMP 1
BB02/03	S87, S88	SWITCH, LOW PRESS., COMP. 1, 2
AA05	T1	TRANSFORMER, CONTROL
FF06	T5	TRANSFORMER, OUTDOOR FAN MOTOR
BB05	T43	TRANSFORMER, CONTACTOR
DD09	T61	TRANSFORMER, INV INTERNAL POWER
AA07	TB13	TERMINAL STRIP, POWER DISTRIBUTION
AA09	AM1, AM2	AIR MONITORS 1, 2

NOTE: UVC-LIGHT POWER: USE JUMPERS PROVIDED IN KIT ON SECONDARY RED T5 WIRES. SEE IAQ DIAGRAM

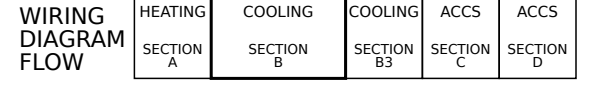


- NOTES
- 1 ONLY ON UNITS WITH HUMIDITROL OPTION
 - 2 FOR REMOTE LOCATION OF RT6, ADD THE EXTENSION HARNESS
 - 3 MOVE WIRES FROM 240 TO 208 TAP ON TRANSFORMER FOR 208 VOLT APPLICATIONS
 - 4 USED ON VAV UNITS ONLY
 - 5 IAQ SENSORS OPTIONAL

WARNING
DISCONNECT ALL POWER BEFORE SERVICING.
ELECTRIC SHOCK HAZARD, CAN CAUSE INJURY OR DEATH. UNIT MUST BE GROUNDED IN ACCORDANCE WITH NATIONAL AND LOCAL CODES.
FOR USE WITH COPPER CONDUCTORS ONLY. REFER TO UNIT RATING PLATE FOR MINIMUM CIRCUIT AMPACITY AND MAXIMUM OVERCURRENT PROTECTION SIZE.
IF ANY WIRE IN THIS APPLIANCE IS REPLACED, IT MUST BE REPLACED WITH WIRE OF LIKE SIZE, RATING AND INSULATION THICKNESS.

Product: LCM, LGM 092U, 102U, 120U & 150U - G & J VOLT
Cooling Diagram with Higher SCCR

Voltage: 460/3/60 (G), 575/3/60 (J)
Supersedes: 538145-02 Form No: 538145-04 Rev: 0



REV	EC NO.	DATE	BY	APVD	REVISION NOTE
---	CN-0120815	07-17-2024	FEP	MCF	ORIGINATED AT PD&R CARROLLTON, TX.

538145-04
01

02

03

04

05

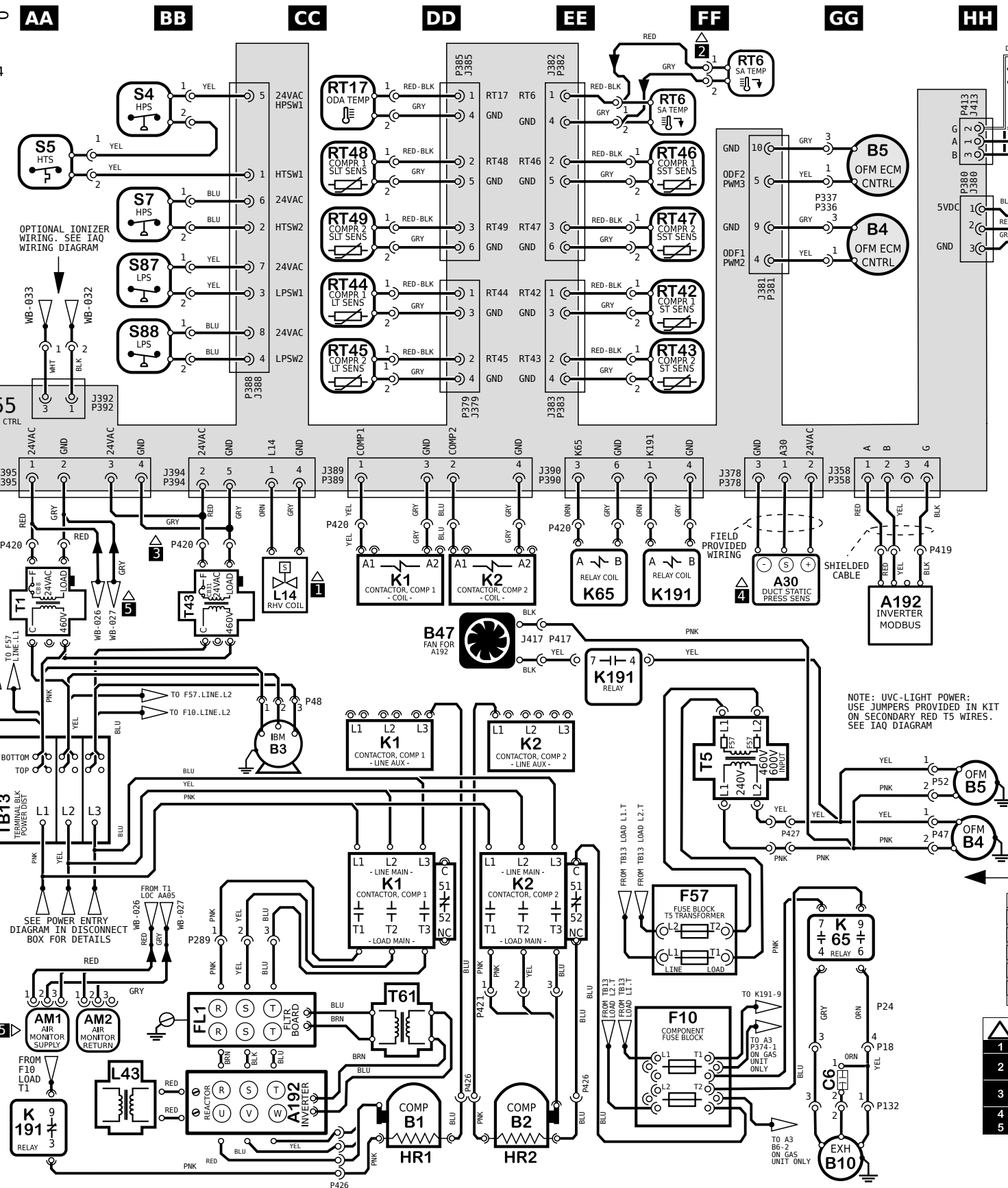
06

07

08

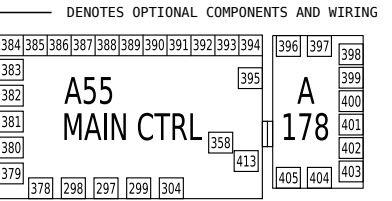
09

10



KEY LIST		
LOCATION	COMPONENT DESCRIPTION	
FF05	A30	SENSOR, DUCT STATIC PRESSURE
GG05, BB09	A192	INVERTER, COMPRESSOR 1
DD/EE10	B1, B2	COMPRESSOR 1, 2
CC06, JJ01	B3	MOTOR, BLOWER
GG02, HH07	B4, B5	MOTOR, OUTDOOR FAN 1, 2
GG10	B10	MOTOR, EXHAUST FAN 1
DD05	B47	MOTOR, COOLING FAN FOR A192
GG09	C6	CAPACITOR, EXHAUST FAN 1
FF09	F10	FUSE, COMPONENT
FF08	F57	FUSE, T5 TRANSFORMER
BB09	FL1	FILTER BOARD
DD/EE10	HR1, HR2	HEATER, COMPRESSOR 1, 2
DD/EE05, 06, 08	K1, K2	CONTACTOR, COMPRESSOR 1, 2
EE05, GG08	K65	RELAY, EXHAUST FAN 1
AA09, FF05, EE06	K191	RELAY, CRANKCASE HEATER 1
CC05	L14	VALVE, SOLENOID, REHEAT COIL 1, 2
BB09	L43	REACTOR INVERTER
HH02	PT6	PRESSURE TRANSDUCER, EBM MOTOR
FF01	RT6	SENSOR, A55 DISCHARGE (IMC)
CC01	RT17	SENSOR, OUTSIDE AIR TEMP
FF03	RT42, RT43	SENSOR, SUCTION TEMP., COMP 1, 2
CC03	RT44, RT45	SENSOR, LIQUID TEMP., COMP 1, 2
FF02	RT46, RT47	SENSOR, SAT. SUCT TEMP., COMP 1, 2
CC02	RT48, RT49	SENSOR, SAT. LIQUID TEMP., COMP 1, 2
BB01/02	S4, S7	LIMIT, HI PRESS. SWITCH, COMP 1, 2
AA02	S5	LIMIT, HI TEMP. SWITCH, COMP 1
BB02/03	S87, S88	SWITCH, LOW PRESS., COMP. 1, 2
AA05	T1	TRANSFORMER, CONTROL
FF06	T5	TRANSFORMER, OUTDOOR FAN MOTOR
BB05	T43	TRANSFORMER, CONTACTOR
DD09	T61	TRANSFORMER, INV INTERNAL POWER
AA07	TB13	TERMINAL STRIP, POWER DISTRIBUTION
AA09	AM1, AM2	AIR MONITORS 1, 2

NOTE: UVC-LIGHT POWER: USE JUMPERS PROVIDED IN KIT ON SECONDARY RED T5 WIRES. SEE IAQ DIAGRAM

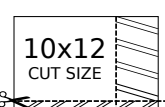
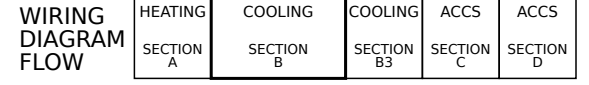


NOTES	
1	ONLY ON UNITS WITH HUMIDITROL OPTION
2	FOR REMOTE LOCATION OF RT6, ADD THE EXTENSION HARNESS
3	MOVE WIRES FROM 240 TO 208 TAP ON TRANSFORMER FOR 208 VOLT APPLICATIONS
4	USED ON VAV UNITS ONLY
5	IAQ SENSORS OPTIONAL

WARNING
DISCONNECT ALL POWER BEFORE SERVICING.
ELECTRIC SHOCK HAZARD, CAN CAUSE INJURY OR DEATH. UNIT MUST BE GROUNDED IN ACCORDANCE WITH NATIONAL AND LOCAL CODES.
FOR USE WITH COPPER CONDUCTORS ONLY. REFER TO UNIT RATING PLATE FOR MINIMUM CIRCUIT AMPACITY AND MAXIMUM OVERCURRENT PROTECTION SIZE.
IF ANY WIRE IN THIS APPLIANCE IS REPLACED, IT MUST BE REPLACED WITH WIRE OF LIKE SIZE, RATING AND INSULATION THICKNESS.

Product: LCM, LGM 092U, 102U, 120U & 150U - G & J VOLT
Cooling Diagram with Higher SCCR

Voltage: 460/3/60 (G), 575/3/60 (J)
Supersedes: 538145-02 Form No: 538145-04 Rev: 0



REV	EC NO.	DATE	BY	APVD	REVISION NOTE
---	CN-0120815	07-17-2024	FEP	MCF	ORIGINATED AT PD&R CARROLLTON, TX.