

**NOTES**

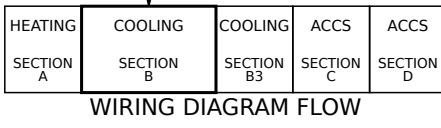
1 RT6 REMOTE MOUNT WIRING

2 MOVE WIRES FROM 240 TO 208 TAP ON TRANSFORMER FOR 208 VOLT APPLICATIONS

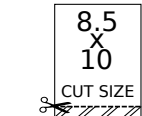
| LOCATION   | COMPONENT DESCRIPTION                                |
|------------|--|
| AA01,02,03 | <b>A55</b> CONTROL BOARD, MAIN                       |
| HH07       | <b>AM1, AM2</b> AIR MONITOR, SUPPLY/RETURN, IAQ-TVOC |
| BB07       | <b>B1</b> COMPRESSOR 1                               |
| HH01,EE06  | <b>B3</b> MOTOR, BLOWER                              |
| GG02,DD06  | <b>B4</b> MOTOR, OUTDOOR FAN 1                       |
| HH06       | <b>B10</b> MOTOR, EXHAUST FAN 1                      |
| HH06       | <b>C6</b> CAPACITOR, EXHAUST FAN 1                   |
| BB07       | <b>HR1</b> HEATER, COMPRESSOR 1                      |
| BB04,05,06 | <b>K1</b> CONTACTOR, COMPRESSOR 1                    |
| HH04,05    | <b>K65</b> RELAY, EXHAUST FAN 1                      |
| BB04,06    | <b>K191</b> RELAY, CRANKCASE HEATER 1                |
| FF04       | <b>L1</b> VALVE, REVERSING 1                         |
| CC04       | <b>L34</b> VALVE, SOLENOID, 2 STG COMPRESSOR         |
| EE01       | <b>RT6</b> SENSOR, A55 DISCHARGE (IMC)               |
| CC01       | <b>RT17</b> SENSOR, OUTSIDE AIR TEMP                 |
| EE02       | <b>RT46</b> SENSOR, SAT. SUCT TEMP, COMP 1           |
| CC02       | <b>RT48</b> SENSOR, SAT. LIQUID TEMP, COMP 1         |
| AA01       | <b>S4</b> LIMIT, HI PRESS. SWITCH, COMP 1            |
| AA01       | <b>S87</b> SWITCH, LOW PRESS., COMP 1                |
| DD04       | <b>T1</b> TRANSFORMER, CONTROL                       |
| EE04       | <b>T43</b> TRANSFORMER, REHEAT                       |

← DENOTES OPTIONAL COMPONENTS AND WIRING

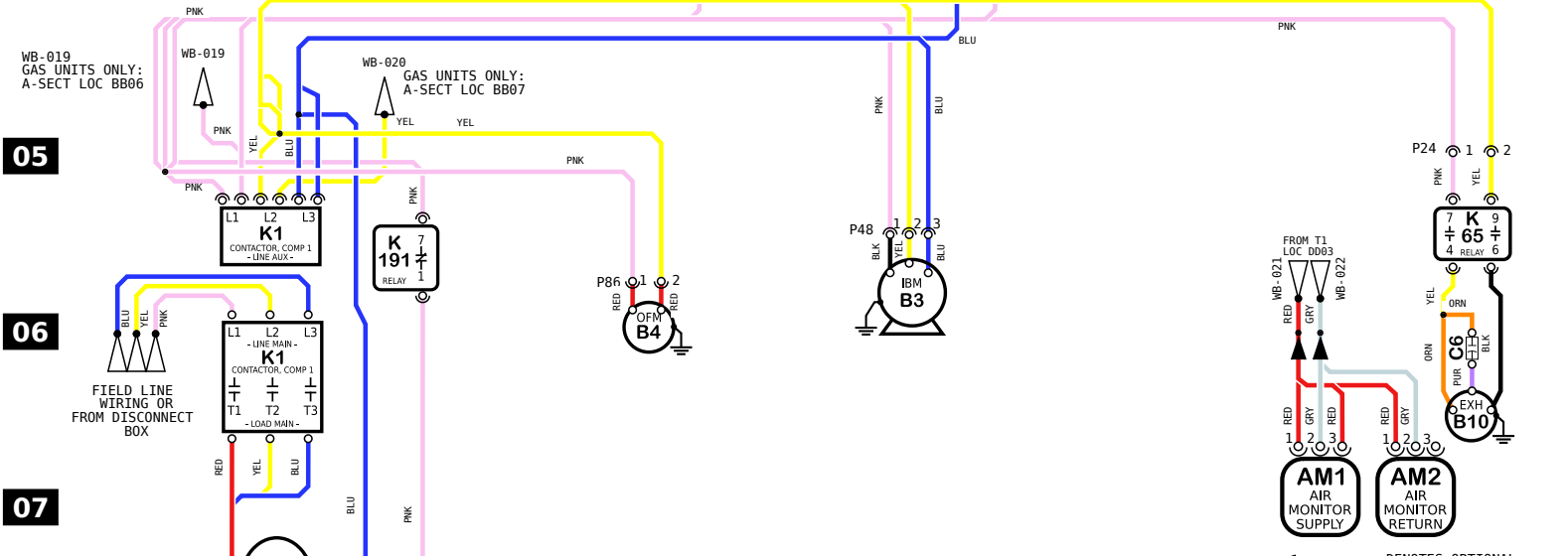
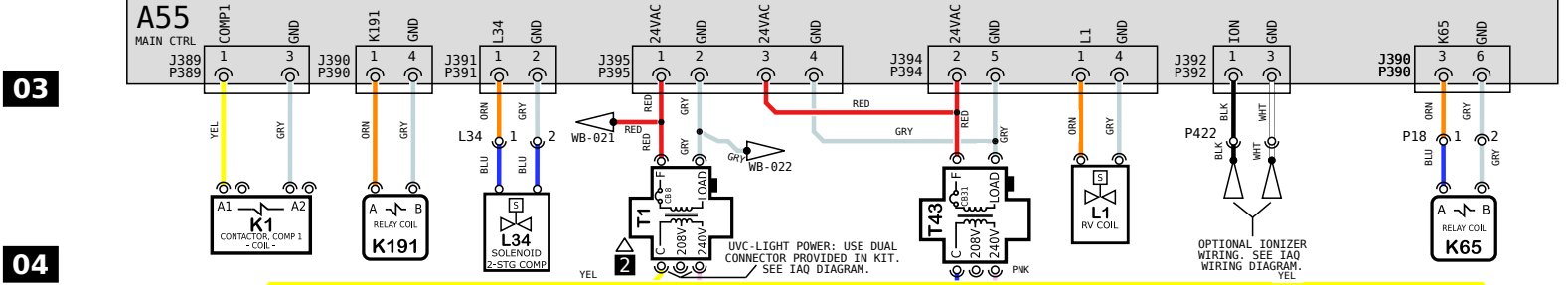
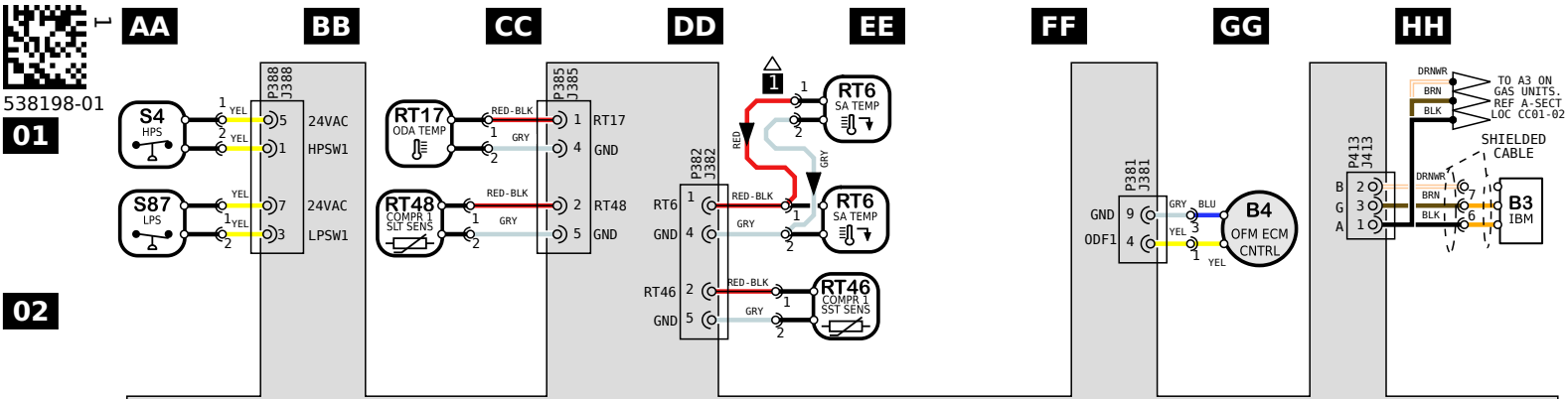
**10** Model: LDT, LHT 036H - 072H Y VOLT HEATPUMP - EBM BLOWER WITHOUT HIGHER SCCR  
 Voltage: 208-240V/3~/60Hz (Y)  
 Supersedes: N/A Form No: 538198-01 Rev: 1



**WARNING**  
 DISCONNECT ALL POWER BEFORE SERVICING.  
 ELECTRIC SHOCK HAZARD, CAN CAUSE INJURY OR DEATH. UNIT MUST BE GROUNDED IN ACCORDANCE WITH NATIONAL AND LOCAL CODES.  
 FOR USE WITH COPPER CONDUCTORS ONLY. REFER TO UNIT RATING PLATE FOR MINIMUM CIRCUIT AMPACITY AND MAXIMUM OVERCURRENT PROTECTION SIZE.  
 IF ANY WIRE IN THIS APPLIANCE IS REPLACED, IT MUST BE REPLACED WITH WIRE OF LIKE SIZE, RATING AND INSULATION THICKNESS.



| REV | EC NO.     | DATE       | BY  | APVD | REVISION NOTE   |
|-----|------------|------------|-----|------|---|
| --  | CN-008852  | 06/01/2022 | AXL | AAH  | ORIGINATED AT PD&R CARROLLTON, TX   |
| 001 | CN-012457P | 3/26/2024  | AXL | AAH  | A) UPDATED MODEL DESC, WAS "036H-060H". UPDATED GROUND IMAGE ON B3/B4/B10 |



**NOTES**

|   |   |
|---|---|
| 1 | RT6 REMOTE MOUNT WIRING   |
| 2 | MOVE WIRES FROM 240 TO 208 TAP ON TRANSFORMER FOR 208 VOLT APPLICATIONS |

| LOCATION   | COMPONENT DESCRIPTION                                |
|------------|--|
| AA01,02,03 | <b>A55</b> CONTROL BOARD, MAIN                       |
| HH07       | <b>AM1, AM2</b> AIR MONITOR, SUPPLY/RETURN, IAQ-TVOC |
| BB07       | <b>B1</b> COMPRESSOR 1                               |
| HH01,EE06  | <b>B3</b> MOTOR, BLOWER                              |
| GG02,DD06  | <b>B4</b> MOTOR, OUTDOOR FAN 1                       |
| HH06       | <b>B10</b> MOTOR, EXHAUST FAN 1                      |
| HH06       | <b>C6</b> CAPACITOR, EXHAUST FAN 1                   |
| BB07       | <b>HR1</b> HEATER, COMPRESSOR 1                      |
| BB04,05,06 | <b>K1</b> CONTACTOR, COMPRESSOR 1                    |
| HH04,05    | <b>K65</b> RELAY, EXHAUST FAN 1                      |
| BB04,06    | <b>K191</b> RELAY, CRANKCASE HEATER 1                |
| FF04       | <b>L1</b> VALVE, REVERSING 1                         |
| CC04       | <b>L34</b> VALVE, SOLENOID, 2 STG COMPRESSOR         |
| EE01       | <b>RT6</b> SENSOR, A55 DISCHARGE (IMC)               |
| CC01       | <b>RT17</b> SENSOR, OUTSIDE AIR TEMP                 |
| EE02       | <b>RT46</b> SENSOR, SAT. SUCT TEMP, COMP 1           |
| CC02       | <b>RT48</b> SENSOR, SAT. LIQUID TEMP, COMP 1         |
| AA01       | <b>S4</b> LIMIT, HI PRESS. SWITCH, COMP 1            |
| AA01       | <b>S87</b> SWITCH, LOW PRESS., COMP 1                |
| DD04       | <b>T1</b> TRANSFORMER, CONTROL                       |
| EE04       | <b>T43</b> TRANSFORMER, REHEAT                       |

← DENOTES OPTIONAL COMPONENTS AND WIRING

**WARNING**

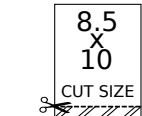
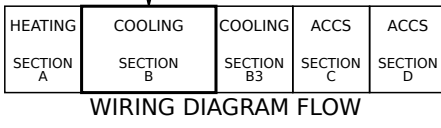
DISCONNECT ALL POWER BEFORE SERVICING.

ELECTRIC SHOCK HAZARD, CAN CAUSE INJURY OR DEATH. UNIT MUST BE GROUNDED IN ACCORDANCE WITH NATIONAL AND LOCAL CODES.

FOR USE WITH COPPER CONDUCTORS ONLY. REFER TO UNIT RATING PLATE FOR MINIMUM CIRCUIT AMPACITY AND MAXIMUM OVERCURRENT PROTECTION SIZE.

IF ANY WIRE IN THIS APPLIANCE IS REPLACED, IT MUST BE REPLACED WITH WIRE OF LIKE SIZE, RATING AND INSULATION THICKNESS.

**10** Model: LDT, LHT 036H - 072H Y VOLT HEATPUMP - EBM BLOWER WITHOUT HIGHER SCCR  
 Voltage: 208-240V/3~/60Hz (Y)  
 Supersedes: N/A Form No: 538198-01 Rev: 1



| REV | EC NO.     | DATE       | BY  | APVD | REVISION NOTE   |
|-----|------------|------------|-----|------|---|
| --  | CN-008852  | 06/01/2022 | AXL | AAH  | ORIGINATED AT PD&R CARROLLTON, TX   |
| 001 | CN-012457P | 3/26/2024  | AXL | AAH  | A) UPDATED MODEL DESC, WAS "036H-060H". UPDATED GROUND IMAGE ON B3/B4/B10 |