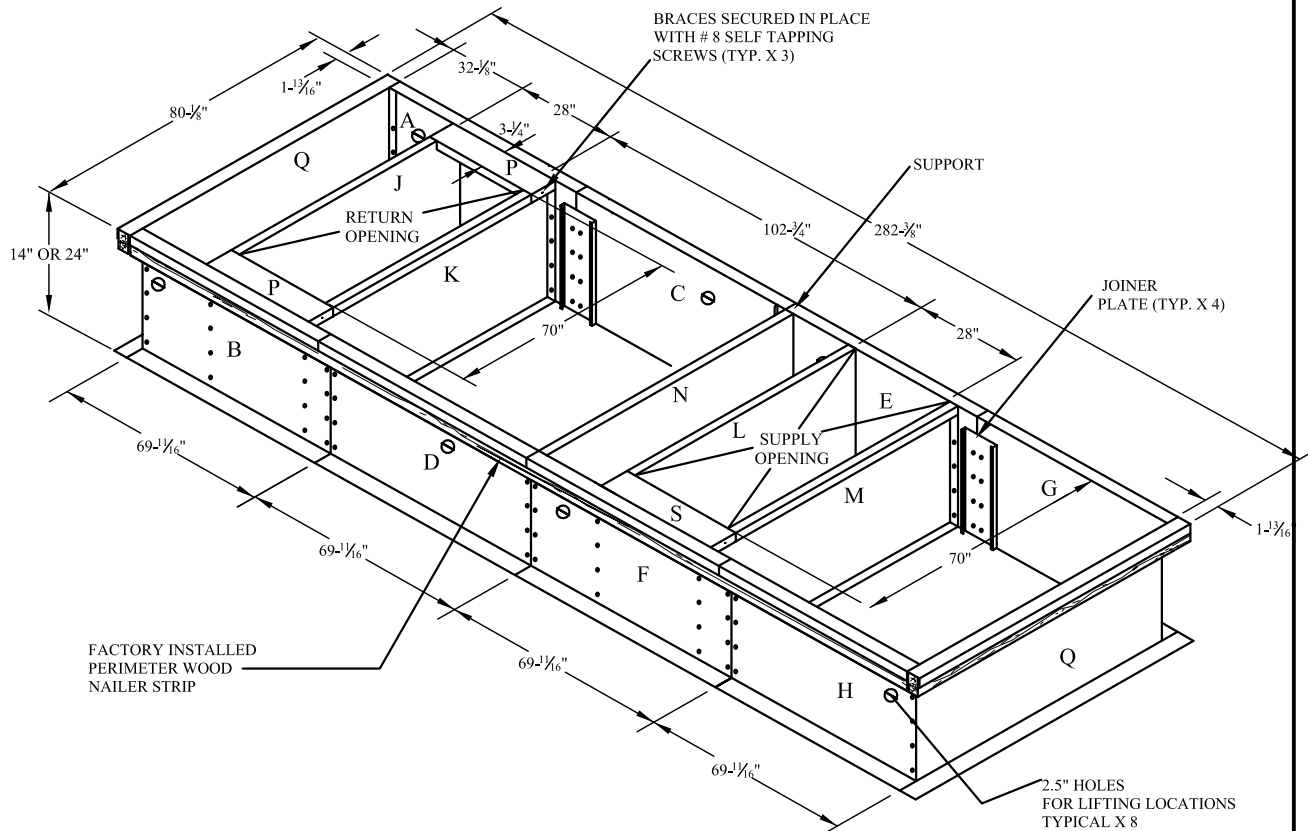




INSTALLATION INSTRUCTION FOR BOLT TOGETHER ROOF CURB TO SUIT ENERGENCE "E" BOX

UNPACK ASSEMBLY AND VERIFY THAT ALL COMPONENTS ARE INCLUDED:			
QTY	ITEM	QTY	ITEM
1	SIDE "A"	1	DIVIDER "M"
1	SIDE "B"	1	SUPPORT "N"
1	SIDE "C"	2	BRACES "P"
1	SIDE "D"	1	BRACE "S"
1	SIDE "E"	4	JOINNER PLATES
1	SIDE "F"	1	HARDWARE BAG CONTAINING INSTALLATION INSTRUCTION
1	SIDE "G"		
1	SIDE "H"	6	# 8 SELF TAPPING SCREWS
2	CURB ENDS "Q"	100	5/16 BOLT
1	DIVIDER "J"	200	5/16 FLAT WASHER
1	DIVIDER "K"	100	5/16 LOCKWASHER
1	DIVIDER "L"	100	5/16 NUT



L190
SEP.,08, 2014



INSTALLATION INSTRUCTION FOR BOLT TOGETHER ROOF CURB TO SUIT ENERGENCE "E" BOX

CURB VERIFICATION

PRIOR TO FRAME FINAL ASSEMBLY AND INSTALLATION, VERIFY THAT ALL DIMENSIONS AND MODEL NUMBER DESIGNATIONS MATCH THOSE SHOWN ON THE ENCLOSED DRAWING. NOTIFY THE FACTORY OF ANY DISCREPANCIES. THE MANUFACTURER WILL NOT ASSUME ANY LIABILITIES OR COSTS AS THE RESULT OF ANY OF THE PROCEDURES LISTED IN THIS INSTRUCTION NOT BEING FOLLOWED AS DIRECTED.

STEP: 1

UNPACK ASSEMBLY AND VERIFY THAT ALL COMPONENTS ARE INCLUDED REFERING TO PARTS LIST.

STEP: 2

LOCATE SIDE PIECES OF CURB (A,B,C,D,E,F,G,H) AND TWO ENDS PIECES (Q,). REFERING TO DRAWING PROVIDED PLACE ALL PANELS IN PROPER LOCATION. ALL PANELS HAVE PRE-PUNCHED HOLES FOR BOLTING TOGETHER.

STEP: 3

USING HARDWARE PROVIDED BOLT ALL PANELS TOGETHER. REFER TO FIG.#1. ****NOTE DO NOT TIGHTEN NUT & BOLT ASSEMBLIES AT THIS POINT*** FOUR JOINNER PLATES ARE REQUIRED INSIDE THE FRAME FOR THE SIDE JOINTS TO FASTEN TOGETHER. THE CENTRE JOINT OF THE CURB IS FASTENED TOGETHER USING THE SUPPORT "N" PANEL.

STEP: 4

LOCATE DIVIDERS (J,K,L,M,) AS PER DRAWING. USING HARDWARE PROVIDED BOLT PANELS IN PLACE. BRACES (P,S) NEED TO BE IN PLACE BEFORE SECURING ITEMS.

STEP: 5

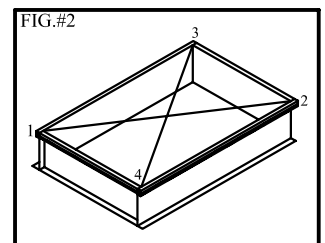
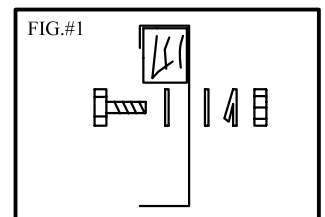
TO ASSURE PROPER MATING WITH THE UNIT IT IS MANDATORY THAT THE MOUNTING FRAME BE SQUARE TO ROOF AND SECURED PROPERLY TO THE STRUCTURE AS FOLLOWS:

- 1- WITH FRAME PLACED LEVEL IN DESIRED LOCATION ON ROOF TRUSSES, TACK WELD ONE CORNER OF FRAME.
- 2- MEASURE FRAME DIAGONALLY FROM ONE CORNER AS SHOWN IN FIG.#2. THESE DIMENSIONS MUST BE EQUAL FOR FRAME TO SQUARE.
- 3-LEVEL TOP OF CURB AND THEN TIGHTEN ALL HARDWARE
- 4- IT IS EXTREMELY IMPORTANT TO VIEW FRAME FROM ALL CORNERS TO MAKE CERTAIN FRAME IS NOT TWISTED ACROSS TOP SIDE. SHIM FRAME UNDER ANY LOW SIDES.
- 5- AFTER FRAME HAS BEEN SQUARED, STRAIGHTENED AND SHIMMED, WELD OR ATTACH FRAME SECURELY TO ROOF.

MAXIMUM SLOPE TOLERANCE: $\frac{1}{16}$ INCH PER LINEAR FOOT IN ANY DIRECTION.

STEP: 6

FASTEN BRACES "P" (X2) AND "S" (X1) IN THE LOCATIONS NOTED ON THE ENCLOSED DRAWING, THESE CHANNELS ARE PROVIDED WITH PRE-PUNCHED HOLES TO ASSIST IN THE FASTENING PROCESS.





INSTALLATION INSTRUCTION FOR BOLT TOGETHER ROOF CURB TO SUIT ENERGENCE "E" BOX

RIGGING CURB FOR LIFTING

- 1- ASSURE ENTIRE CURB IS FASTENED TOGETHER PROPERLY AND ALL NUT & BOLT ASSEMBLYS ARE TIGHTENED.
- 2- THE ROOF CURB HAS EIGHT 2-1/2" LIFTING HOLES PROVIDED FOR RIGGING
- 3- USE ONLY STEEL BRAIDED LINES OR CHAINS WITH METAL HOOKS OR CLEAVISES FOR LIFTING TO AVOID POSSIBLE SHEARING OF LIFTING LINES.
- 4- ASSURE UNIT IS RIGGED PROPERLY AND WEIGHT IS DISTRIBUTED EVENLY BEFORE LIFTING. LIFTING POINT SHOULD BE DIRECTLY ABOVE CENTER OF GRAVITY.

