



538212-01

01

02

03

04

05

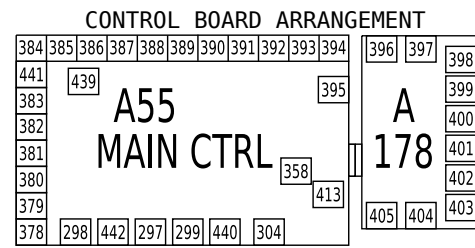
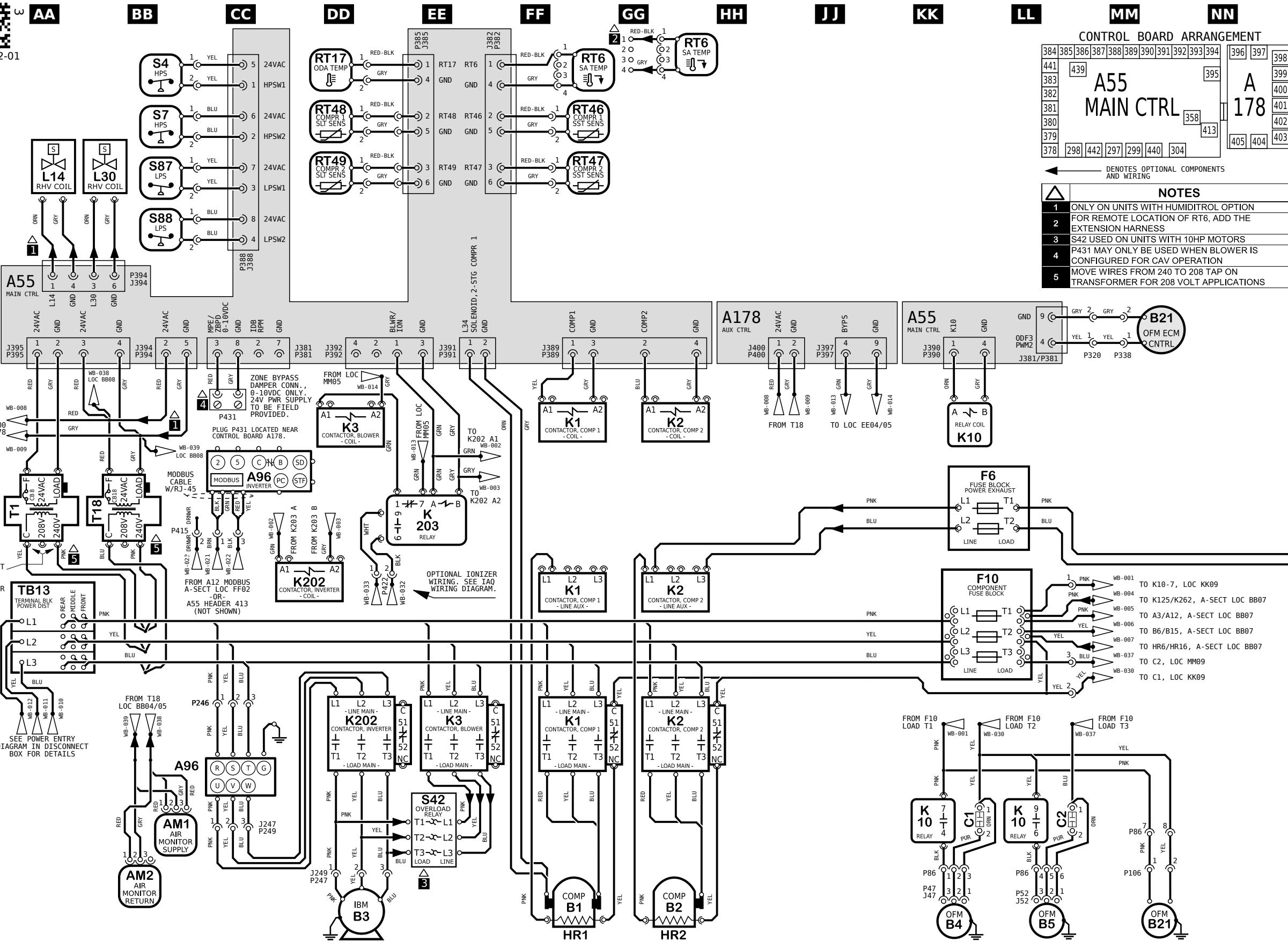
06

07

08

09

10



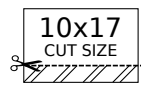
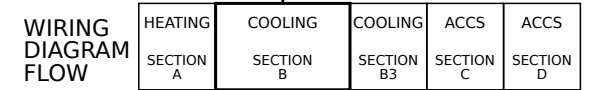
← DENOTES OPTIONAL COMPONENTS AND WIRING

NOTES	
1	ONLY ON UNITS WITH HUMIDITROL OPTION
2	FOR REMOTE LOCATION OF RT6, ADD THE EXTENSION HARNESS
3	S42 USED ON UNITS WITH 10HP MOTORS
4	P431 MAY ONLY BE USED WHEN BLOWER IS CONFIGURED FOR CAV OPERATION
5	MOVE WIRES FROM 240 TO 208 TAP ON TRANSFORMER FOR 208 VOLT APPLICATIONS

KEY LIST		
LOCATION	COMPONENT DESCRIPTION	
CC05/08	A96	CONTROL INVERTER, BLOWER
BB09	AM1, AM2	AIR MONITOR, SUPPLY/RETURN, IAQ-TVOC
FF/GG10	B1, B2	COMPRESSOR 1, 2
DD10	B3	MOTOR, BLOWER
KK10, LL10	B4, B5	MOTOR, OUTDOOR FAN 1, 2
MM04/10	B21	MOTOR, OUTDOOR FAN 3
QQ09	B10, B11	MOTOR, EXHAUST FAN 1, 2
KK09	C1	CAPACITOR, OUTDOOR FAN 1
LL09	C2	CAPACITOR, OUTDOOR FAN 2
QQ09	C6, C8	CAPACITOR, EXHAUST FAN 1, 2
LL05	F6	FUSE, EXHAUST FAN
LL07	F10	FUSE, COMPONENT
FF/GG10	HR1, HR2	HEATER, COMPRESSOR 1, 2
FF05,06,08	K1	CONTACTOR, COMPRESSOR 1
GG05,06,08	K2	CONTACTOR, COMPRESSOR 2
DD05/EE08	K3	CONTACTOR, BLOWER
KK05/09	K10	RELAY, OUTDOOR FAN 1
QQ07	K65, K231	RELAY, EXHAUST FAN 1, 2
DD06/08	K202	CONTACTOR, INVERTER
EE06	K203	RELAY, INVERTER CONTROL
AA02	L14, L30	VALVE, SOLENOID, REHEAT COIL 1, 2
GG01	RT6	SENSOR, A55 DISCHARGE (IMC)
DD01	RT17	SENSOR, OUTSIDE AIR TEMP
GG02	RT46, RT47	SENSOR, SAT. SUCT TEMP., COMP 1, 2
DD02	RT48, RT49	SENSOR, SAT. LIQUID TEMP., COMP 1, 2
BB01/02	S4, S7	LIMIT, HI PRESS. SWITCH, COMP 1, 2
EE09	S42	OVERLOAD, RELAY, BLOWER MOTOR
BB02	S87, S88	SWITCH, LOW PRESS., COMP. 1, 2
AA06	T1	TRANSFORMER, CONTROL
BB06	T18	TRANSFORMER, CONTACTOR
AA07	TB13	TERMINAL STRIP, POWER DISTRIBUTION

Model: LGT, LCT 156H - Y-VOLT
 COOLING - MSAV WITH BYPASS - 2 COMPRESSORS 3 CONDENSER FANS

Voltage: 208-240V/3~/60Hz (Y)
 Supersedes: N/A Form No: 538212-01 Rev: 3



REV	EC NO.	DATE	BY	APVD	REVISION NOTE
---	CN-010356	06-20-2022	MXR6	JAL21	ORIGINATED AT PD&R CARROLLTON, TX
002	CN-010356L	09-12-2022	MXR6	JAL21	A) ADDED K10-6/-9 TO CONDENSER FAN SECTION. P86-7/-8 WAS P87-1/-2.
003	CN-012015A	04-10-2024	MXR6	JAL21	UPDATED GND SYMBOLS ON MOTORS AND INVERTER

© 2019



538212-01

01

02

03

04

05

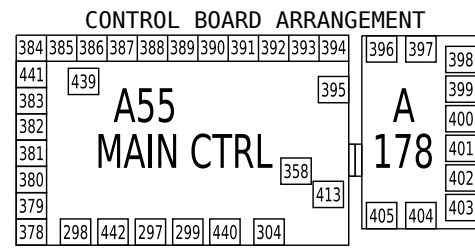
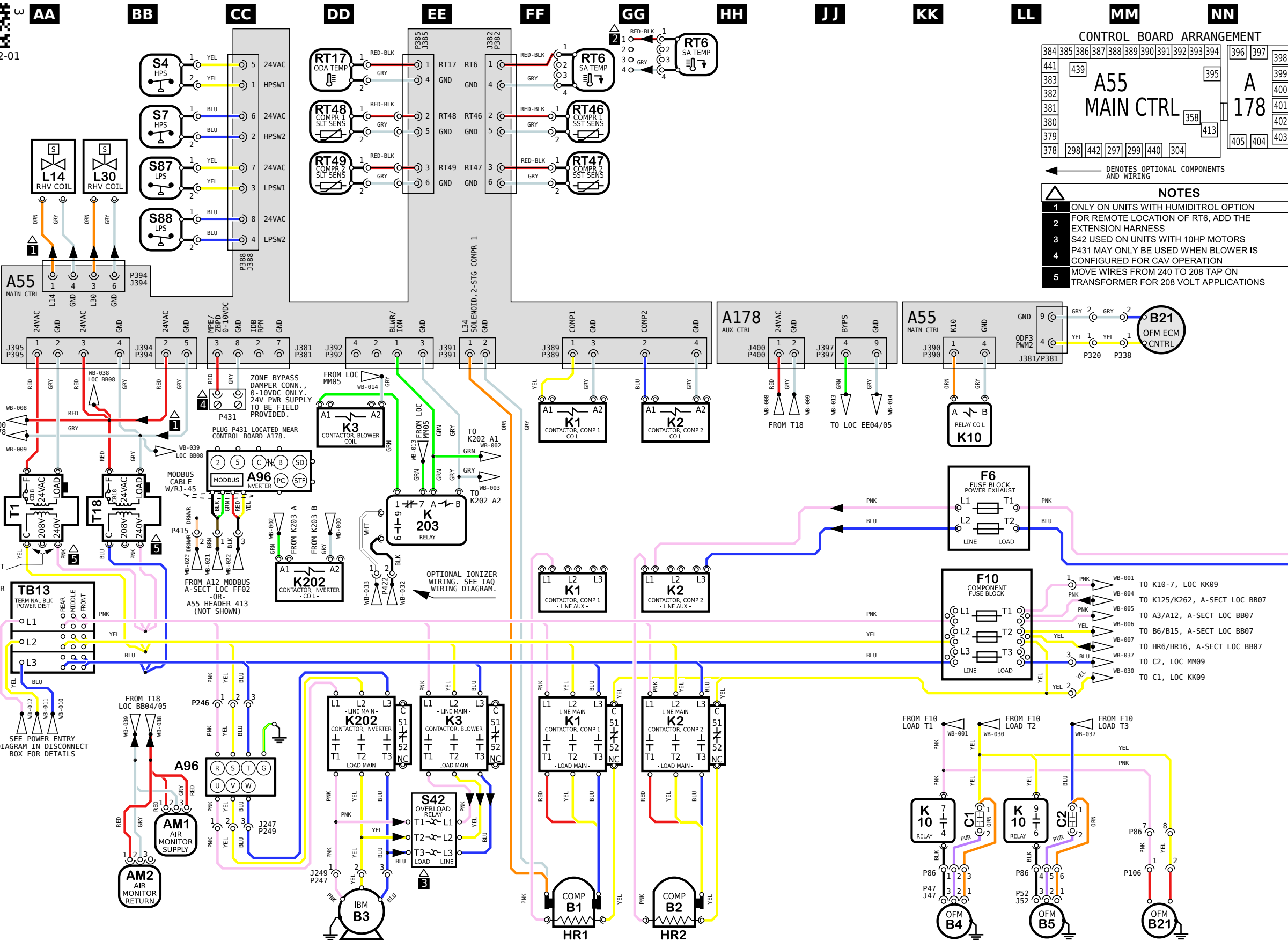
06

07

08

09

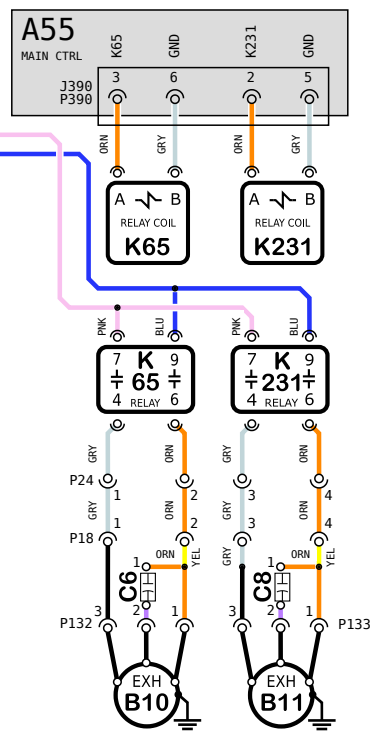
10



← DENOTES OPTIONAL COMPONENTS AND WIRING

NOTES	
1	ONLY ON UNITS WITH HUMIDITROL OPTION
2	FOR REMOTE LOCATION OF RT6, ADD THE EXTENSION HARNESS
3	S42 USED ON UNITS WITH 10HP MOTORS
4	P431 MAY ONLY BE USED WHEN BLOWER IS CONFIGURED FOR CAV OPERATION
5	MOVE WIRES FROM 240 TO 208 TAP ON TRANSFORMER FOR 208 VOLT APPLICATIONS

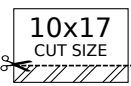
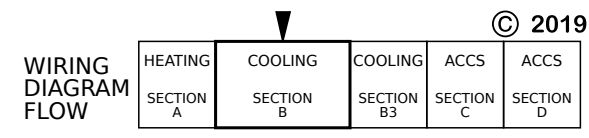
KEY LIST		
LOCATION	COMPONENT DESCRIPTION	
CC05/08	A96	CONTROL INVERTER, BLOWER
BB09	AM1, AM2	AIR MONITOR, SUPPLY/RETURN, IAQ-TVOC
FF/GG10	B1, B2	COMPRESSOR 1, 2
DD10	B3	MOTOR, BLOWER
KK10, LL10	B4, B5	MOTOR, OUTDOOR FAN 1, 2
MM04/10	B21	MOTOR, OUTDOOR FAN 3
QQ09	B10, B11	MOTOR, EXHAUST FAN 1, 2
KK09	C1	CAPACITOR, OUTDOOR FAN 1
LL09	C2	CAPACITOR, OUTDOOR FAN 2
QQ09	C6, C8	CAPACITOR, EXHAUST FAN 1, 2
LL05	F6	FUSE, EXHAUST FAN
LL07	F10	FUSE, COMPONENT
FF/GG10	HR1, HR2	HEATER, COMPRESSOR 1, 2
FF05,06,08	K1	CONTACTOR, COMPRESSOR 1
GG05,06,08	K2	CONTACTOR, COMPRESSOR 2
DD05/EE08	K3	CONTACTOR, BLOWER
KK05/09	K10	RELAY, OUTDOOR FAN 1
QQ07	K65, K231	RELAY, EXHAUST FAN 1, 2
DD06/08	K202	CONTACTOR, INVERTER
EE06	K203	RELAY, INVERTER CONTROL
AA02	L14, L30	VALVE, SOLENOID, REHEAT COIL 1, 2
GG01	RT6	SENSOR, A55 DISCHARGE (IMC)
DD01	RT17	SENSOR, OUTSIDE AIR TEMP
GG02	RT46, RT47	SENSOR, SAT. SUCT TEMP., COMP 1, 2
DD02	RT48, RT49	SENSOR, SAT. LIQUID TEMP., COMP 1, 2
BB01/02	S4, S7	LIMIT, HI PRESS. SWITCH, COMP 1, 2
EE09	S42	OVERLOAD, RELAY, BLOWER MOTOR
BB02	S87, S88	SWITCH, LOW PRESS., COMP. 1, 2
AA06	T1	TRANSFORMER, CONTROL
BB06	T18	TRANSFORMER, CONTACTOR
AA07	TB13	TERMINAL STRIP, POWER DISTRIBUTION



WARNING
DISCONNECT ALL POWER BEFORE SERVICING.
ELECTRIC SHOCK HAZARD. CAN CAUSE INJURY OR DEATH. UNIT MUST BE GROUNDED IN ACCORDANCE WITH NATIONAL AND LOCAL CODES.
FOR USE WITH COPPER CONDUCTORS ONLY. REFER TO UNIT RATING PLATE FOR MINIMUM CIRCUIT AMPACITY AND MAXIMUM OVERCURRENT PROTECTION SIZE.
IF ANY WIRE IN THIS APPLIANCE IS REPLACED, IT MUST BE REPLACED WITH WIRE OF LIKE SIZE, RATING AND INSULATION THICKNESS.

Model: LGT, LCT 156H - Y-VOLT
COOLING - MSAV WITH BYPASS - 2 COMPRESSORS 3 CONDENSER FANS

Voltage: 208-240V/3~/60Hz (Y)
Supersedes: N/A Form No: 538212-01 Rev: 3



REV	EC NO.	DATE	BY	APVD	REVISION NOTE
---	CN-010356	06-20-2022	MXR6	JAL21	ORIGINATED AT PD&R CARROLLTON, TX
002	CN-010356L	09-12-2022	MXR6	JAL21	A) ADDED K10-6/-9 TO CONDENSER FAN SECTION. P86-7/-8 WAS P87-1/-2.
003	CN-012015A	04-10-2024	MXR6	JAL21	UPDATED GND SYMBOLS ON MOTORS AND INVERTER

© 2019